



# Residential Case Study

## PROJECT BACKGROUND – FOXLEY LANE, PURLEY



### Project Background

Foxley Lane is a redevelopment of a former residential care home on a prominent corner plot west of Purley town centre in a prime position on one of West Purley's premier roads. This development comprises of a five-storey building with fifty-seven exquisite one, two and three bed apartments located within a mile of Purley mainline station. All with parking and a private balcony or patio, it also features white rendered façades and prominent gabled elevations, significantly enhancing the Foxley Lane street scene.

Cellecta's **Mojave S2-8** was specified by **OB Architecture** as it offers a dry and robust floor build up from one source. **Mojave S2-8** is a high-performance underfloor heating system which performs at a low flow temperature. **XFLO-FF** boards are manufactured to suit the pipe diameter and spacing required to achieve the desired thermal output.

**HQ Homes** were awarded this 530m<sup>2</sup> contract to construct this redevelopment.

### Products Installed Information

#### Architect

OB Architecture

#### Contractor

HQ Homes

#### Type of Construction

Residential

#### Project size

530m<sup>2</sup>

#### Applications

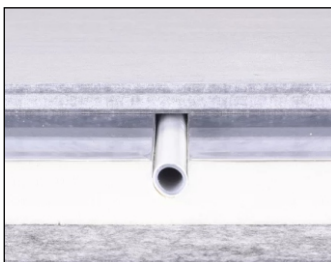
Mojave S2-8

YELOfon ES5

Pro Adhesive

ScreedBoard Tool Kit

### Mojave® S2-8



Scan Me

### YELOfon® ES5



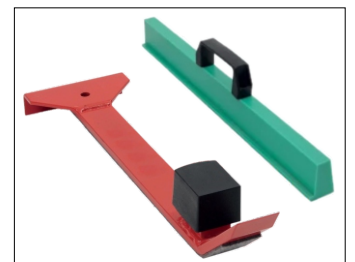
Scan Me

### CELLECTA Pro



Scan Me

### Tool Kit



Scan Me

