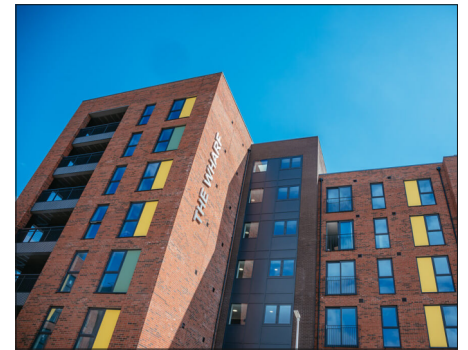




**CELLECTA**  
INNOVATION IN INSULATION

# Residential Case Study

## PROJECT BACKGROUND – THE WHARF, CARDIFF



### Project Background

The Wharf consists of 200 one, two, or three bedroom social housing apartments, with some featuring balconies and Juliet balconies. Alongside this development, a shop and a coffee shop are located on the ground floor, along with parking and bike racks. The site was formally known as The Wharf pub, which was demolished in 2016. Permission was granted for signs reading 'The Wharf' to be installed on some of the blocks of flats, which have been split into different blocks around the site, varying between three and seven storeys.

Cellecta's **ScreedBoard 28** was specified by **Morgan2Morgan Architects** due to it being suitable for all floor types and is frequently viewed as the solution of choice for new build and refurbishment developments. Its interlocking edges for installation convenience, high density, and unique resilient layer provides unrivalled acoustic performance.

**Willis Construction** was awarded this 5,000m<sup>2</sup> contract for this development in Cardiff Bay.

#### Architect

Morgan2Morgan Architects

#### Contractor

Willis Construction

#### Type of Construction

Residential

#### Project size

5,000m<sup>2</sup>

#### Applications

ScreedBoard 28

YELOfon FS50

### Products Installed Information

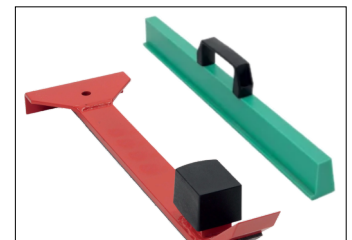
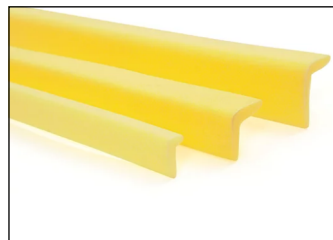
**ScreedBoard**<sup>®</sup> **28**

**YELOfon**<sup>®</sup> **FS50**

### Associated Products Information

**CELLECTA** Pro

Tool Kit



Scan Me



Scan Me



Scan Me



Scan Me



01634 29-66-77



[cellecta.co.uk](http://cellecta.co.uk)



[technical@cellecta.co.uk](mailto:technical@cellecta.co.uk)