

# Residential Case Study

## PROJECT BACKGROUND – HAYDONS ROAD, WIMBLEDON



### Project Background

Haydons Road is a block of 8 purpose-built flats consisting of seven one beds, and one two beds arranged in two interlinked blocks. The front block includes six flats over three floors with two further flats to the rear block over two. This development is located within walking distance of Haydons Road station and offers regular links into central London.

Collecta's **Mojave S2-8** was specified by **Papa Architects** as it offers a dry and robust floor build up from one source. **Mojave S2-8** is a high-performance underfloor heating system which performs at a low flow temperature. **XFLO FF** boards are manufactured to suit the pipe diameter and spacing required to achieve the desired thermal output.

**Caldera Construction** was awarded this 100m<sup>2</sup> contract for this development in Wimbledon.

### Products Installed Information

### Associated Products Information

#### Architect

Papa Architects

#### Contractor

Caldera Construction

#### Type of Construction

Residential

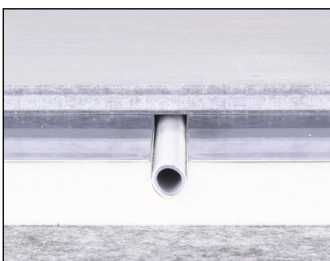
#### Project size

100m<sup>2</sup>

#### Applications

Mojave S2-8

### Mojave<sup>®</sup> S2-8



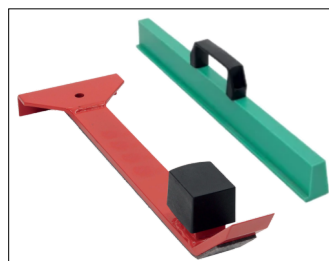
Scan Me

### CELLECTA Pro



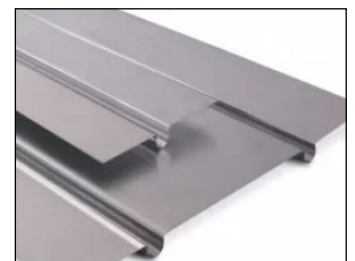
Scan Me

### Tool Kit



Scan Me

### ULTRApLATE



Scan Me



01634 29-66-77



collecta.co.uk



technical@collecta.co.uk