

Residential Case Study

PROJECT BACKGROUND – REDLAND COURT, BRISTOL



Project Background

Redland Court is an exceptional landmark development of the former Redland High School, which was transformed into a collection of architecturally unique buildings to create 44 new 1, 2 and 3 bedroom apartments located in Bristol. Also, an exquisite duplex and townhouse over two floors with an open plan living area, additional mezzanine living space and roof terrace. Many of the original period features will be meticulously retained and restored, with the original Old School Hall and Library.

Collecta **Mojave S2-8** was specified by **KWL Architects** for its high-performance underfloor heating system, it offers a dry and robust floor build-up from one source. **XFLO-FF** boards are manufactured to suit the pipe diameter and spacing required to achieve the desired thermal output.

Juniper Homes were awarded this 600m² contract to develop this collection of architecturally unique buildings.

Architect

KWL Architects

Contractor

Juniper Homes

Type of Construction

Residential

Project size

600m²

Applications

Mojave S2-8

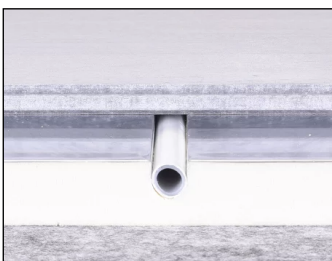
DECKfon Quattro 39

ScreedBoard 28

ScreedBoard Tool Kit

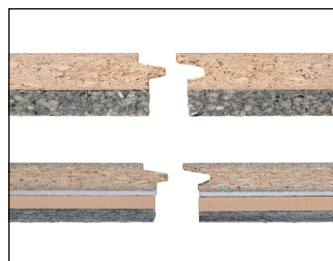
Products Installed Information

Mojave® S2-8



Scan Me

37T & 39



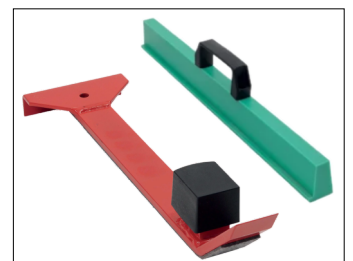
Scan Me

ScreedBoard® 28



Scan Me

Tool Kit



Scan Me



01634 29-66-77



collecta.co.uk



technical@collecta.co.uk