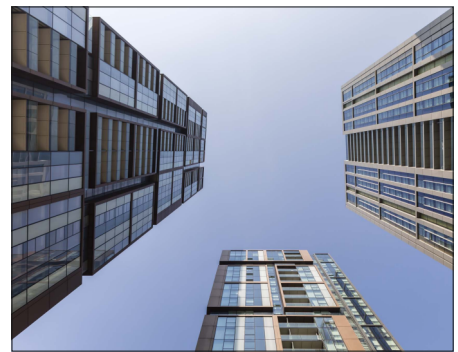


# Residential Case Study

PROJECT BACKGROUND – HARBOUR CENTRAL,  
LIGHTERMAN'S ROAD



## Project Background

Harbour Central is a condominium complex in London's Docklands, costing £17.6 million and comprising 642 private one, two, and three bedroom apartments divided across five residential buildings. This 30,000m<sup>2</sup> development also provides eight penthouse apartments with a leisure complex, all only minutes from Canary Wharf.

Collecta **YELOfon HD10+** was specified by **Rolfe Judd Architecture** in this development for its unrivalled acoustic performance when used to isolate a floating screed from a structural concrete floor. This product also works in conjunction with underfloor heating.

**Galliard Homes UKS** was awarded the contract to construct these luxury private apartments.

### Architect

Rolf Judd Architecture

### Contractor

Galliard Homes UKS

### Type of Construction

Commercial

### Project size

30,000m<sup>2</sup>

### Applications

YELOfon HD10+

## Products Installed Information

### HD10+



Scan Me

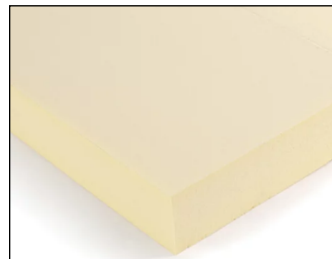
## Associated Products Information

### XFLOOR



Scan Me

### XFLOOR 300



Scan Me

### XFLOOR 700



Scan Me