



Residential Case Study

PROJECT BACKGROUND – WEY HILL, SURREY



Project Background

Wey Hill is a three-story building accommodating eight apartments located in Haslemere in the borough of Waverley in Surrey. Demolition of the existing warehouse was authorised to build this 570m² development, consisting of two one bedroom and six two bedroom apartments, located 12 miles from Guildford.

Cellecta's **Mojave S2-10** was specified by **Landmark Estates** for its high-performance underfloor heating system that offers a dry and robust floor build-up from one source. **XFLO FF** boards are manufactured to suit the pipe diameter and spacing required to achieve the desired thermal output.

Vero Developments were awarded the contract to erect this development.

Architect

Landmark Estates

Contractor

Vero Developments

Type of Construction

Residential

Project size

570m²

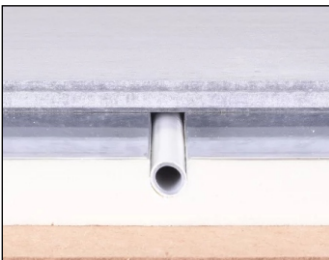
Applications

Mojave S2-10

YELOfon HD10+

Products Installed Information

Mojave® S2-10



Scan Me

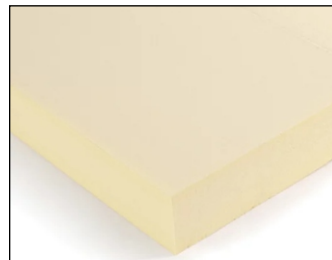
HD10+



Scan Me

Associated Products Information

XFLOOR



Scan Me

XFLOOR 700



Scan Me

