

Timber I-joist separating floor

PCT solution to Robust Detail: E-FT-4

Screed laid on **CELLECTA** resilient layers
Acoustic treatment laid on timber sub-deck
Use with timber frame walls only

35mm proprietary screed, nominal 80kg/m² mass per unit area

1. 10mm **CELLECTA YELOfon® HD10+**
2. **YELOfon® E-strip** perimeter edge strip
3. **J-strip** acoustic joining tape

2nd resilient layer 15mm **CELLECTA FIBREfon® 15**

Structural floor 15mm thick (min) wood based board, density 600kg/m³ (min)

Floor joists 220mm (min) timber I-joists at 400mm (max) centres

- 50mm **CELLECTA FIBREfon® Micro 50**
- 100mm (min) quilt insulation (10-36kg/m³)

See Table 2T.02b for ceiling treatment options

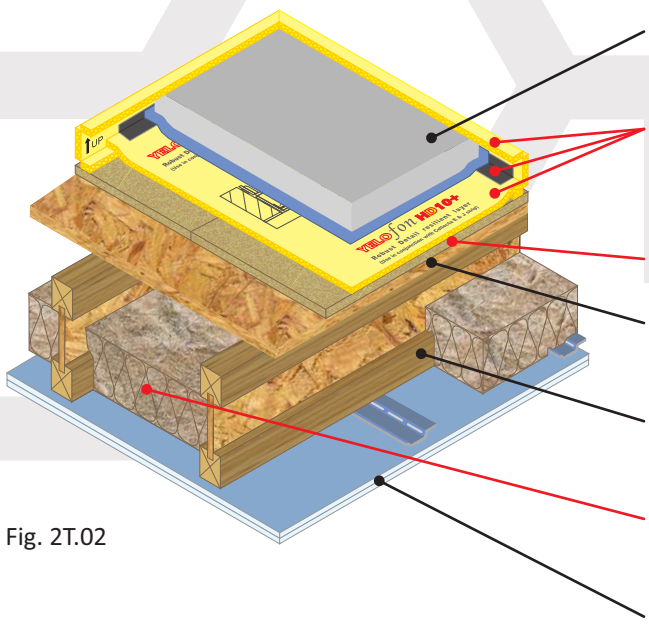
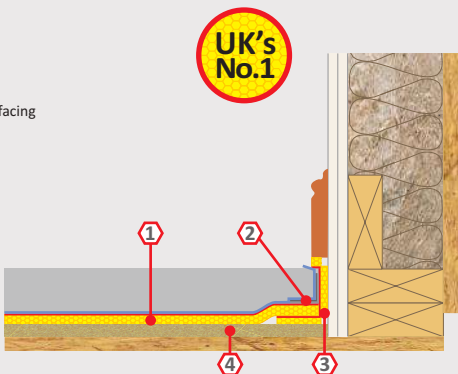


Fig. 2T.02

Installation Options

Resilient layers laid under screed

1. **YELOfon® HD10+**
High density polyethylene foam with *Surebond* facing
Dimensions: 10mm x 1.5m x 33.33m (50m²)
2. **YELOfon® J-strip**
Ultra high grab acoustic joining tape
3. **YELOfon® E-strip**
Self adhesive perimeter edge strip
4. **FIBREfon® 15**
Woodfibre resilient layer
Dimensions: 15mm x 600mm x 1200mm



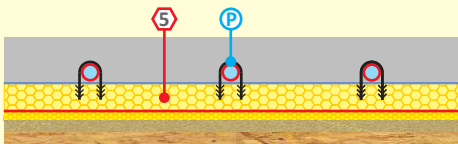
Resilient layer system laid under screed containing underfloor heating system

5. **HEXATHERM® XFLOOR 250, 300, 500 (kPa)**
High performance extruded polystyrene
Dimensions: 25-160mm x 600mm x 2500mm
- P. UHF water pipe (by others)

The structural walls and floor must be designed to withstand the load imposed by the floor treatment.



Ensure fixings used to secure the pipe do NOT penetrate the HD10+



Construction notes

Materials must be installed in accordance with manufacturers' instructions to achieve stated acoustic values.
Wall treatments **MUST** be isolated from the floating floor with **YELOfon E-Strip** perimeter edge strip.
Services must not puncture primary ceiling lining (except cables, which should be sealed with flexible sealant).

Ceiling Treatment Options

Ceiling boards must not penetrate or touch joists

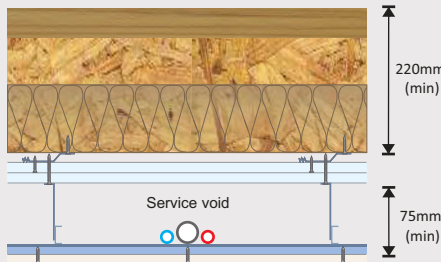
16mm (min) metal resilient bars mounted at right angles to the joists at 400mm centres.

CT2-Two layers of gypsum-based board, composed of 15mm (nominal 12.5kg/m²) fixed with 25mm screws and a second layer of 15mm (nominal 12.5kg/m²) fixed with 42mm screws, with all joints staggered.



Sacrificial ceiling (optional)

Metal ceiling system with a 100mm (min) void fixed to underside of primary ceiling. One layer of nominal 8kg/m² gypsum based board.



Sound absorbing quilt fitted between joists

- 50mm **CELLECTA FIBREfon Micro 50** quilt
- 100mm (min) mineral wool quilt -10-33kg/m³

Acoustic Performance

Airborne: 57dB $D_{nT,w} + C_{tr}$
Impact: 52dB $L_{nT,w}$

Building Regs
+ 5dB



Values quoted are typical and based on the treatment being installed correctly and pre-completion tested (PCT).
Airborne performance tested in accordance with BS EN ISO 140-4:1998
Impact performance tested in accordance with BS EN ISO 140-7:1998

Third Party Accreditation and Approvals

Environmental Credentials