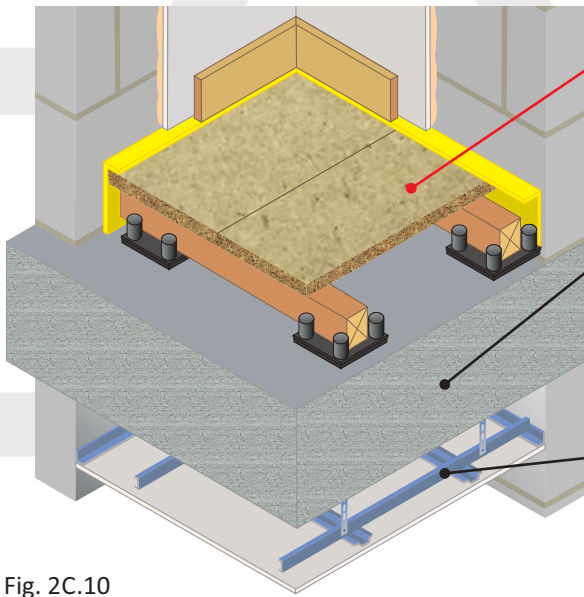


In-situ concrete slab separating floor

Robust Detail E-FC-2

CELLECTA floating floor treatment laid on structural floor
In-situ concrete slab



Floating floor acoustic treatment options

- FFT1 - CELLECTA DECKfon® Batten 70
- FFT2 - CELLECTA RUBBERfon® Cradles
- FFT3 - CELLECTA DECKfon® Batten 45
- FFT4 - CELLECTA ScreedBoard® 30
- FFT5 - CELLECTA FIBREfon® 12C/21C/28C

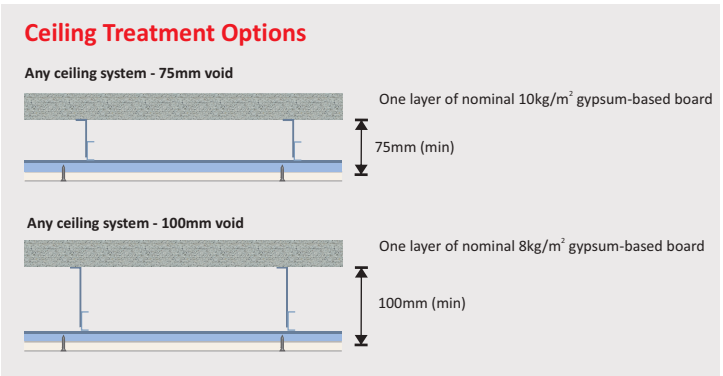
Structural floor

- 250mm (min) in-situ concrete slab, 2400kg/m³ density without screed
- 200mm (min) in-situ concrete slab 2400kg/m³ density with screed: 40mm sand & cement screed or 80kg/m² (min) proprietary screed directly applied to slab

Ceiling See Table 2C.10a for ceiling treatment options

Fig. 2C.10

Table 2C.10a



Acoustic Performance

rd impact performance values quoted were conducted at Sound Research Laboratories (UKAS ref. 0444) in accordance with BS EN ISO 10140-3 and BS EN ISO 10140-4 and rated in accordance with BS EN ISO 717-2:2013 as detailed in Appendix D of the Robust Details hand book (minimum value required $rd_{\Delta_w} = 17dB$).
PCT values quoted are typical, based on the treatment being installed correctly and pre-completion tested, with airborne performance tested in accordance with BS EN ISO 140-4:1998 and impact performance tested in accordance with BS EN ISO 140-7: 1998.

Third Party Accreditation and Approvals



Environmental Credentials



Table 2C.10b

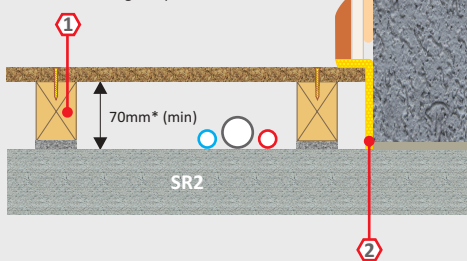
FFT1 Resilient composite deep batten system

1 **DECKfon® Batten 70**

Deep acoustic batten: 75mm x 45mm x 2400mm
*Height indicated when floor is loaded to 25kg/m²

2 **YELOfon® ES5/120**

Perimeter edge strip: 5mm x 120mm x 50m



Airborne
57dB $D_{nT,w} + C_{tr}$

Impact
43dB $L_{nT,w}$
 $rd \Delta L_w = 27dB$

Building Regs
≥+8dB

BBA VERIFIED RD DATA

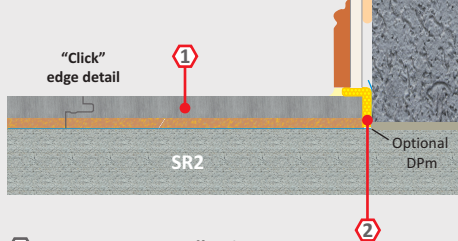
Additional item required to complete treatment: 18mm (min) tongue & groove flooring board

Table 2C.10e

FFT4 Resilient overlay platform floor system

1 **ScreedBoard® 30** high performance, dense acoustic composite overlay board
Dimensions: 30mm x 600mm x 1200mm
Weight: 27.20kg/m² / 19.58kg/board

2 **YELOfon® FS50**
Preformed flanking strip:
6mm x 50mm x 30mm x 2m



Airborne
55dB $D_{nT,w} + C_{tr}$

Impact
48dB $L_{nT,w}$
 $rd \Delta L_w = 22dB$

Building Regs
≥+8dB

BBA VERIFIED RD DATA

CLASS B/F, S1 BS EN13501-1

3 **CELLECTA Pro Adhesive**
ScreedBoard joint adhesive
Bottle size: 1L / 33m²

Additional item required: ScreedBoard fixing tools

Table 2C.10c

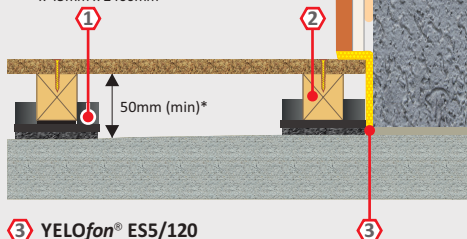
FFT2 Resilient cradle and batten levelling system

1 **RUBBERfon® Cradles**

10mm high x 100mm x 100mm
Levelling packers: 2, 3 & 5mm
Elevation blocks: 15 & 30mm

2 **CELLECTA Softwood timber batten**

Standard dimensions: 40, 65mm⁽¹⁾
x 45mm x 2400mm



Airborne
55dB $D_{nT,w} + C_{tr}$

Impact
45dB $L_{nT,w}$
 $rd \Delta L_w = 25dB$

Building Regs
≥+8dB

BBA VERIFIED RD DATA

3 **YELOfon® ES5/120**
Perimeter edge strip: 5mm x 120mm x 50m

Additional item required to complete treatment: 18mm (min) tongue & groove flooring board.
⁽¹⁾ Other height battens available upon request. *Height indicated when floor is loaded to 25kg/m²

Table 2C.10f

FFT5 Resilient shallow overlay platform floor system

1 **FIBREfon® 12C, 21C, 28C**

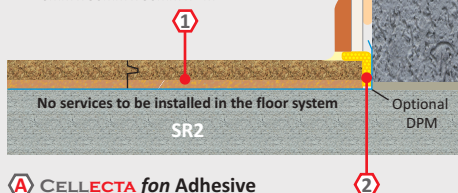
12C: 12mm x 600mm x 2400mm
21C: 21mm x 600mm x 2400mm
28C: 28mm x 600mm x 2400mm

2 **12C: YELOfon® ES5/60**

Perimeter edge strip: 5mm x 60mm x 50m

21C, 28C: YELOfon® FS30

Pre-formed flanking strip:
6mm x 50mm x 30mm x 2m



12C Airborne
51dB $D_{nT,w} + C_{tr}$

12C Impact
49dB $L_{nT,w}$
 $rd \Delta L_w = 21dB$

21C Airborne
51dB $D_{nT,w} + C_{tr}$

21C Impact
52dB $L_{nT,w}$
 $rd \Delta L_w = 18dB$

28C Airborne
51dB $D_{nT,w} + C_{tr}$

28C Impact
49dB $L_{nT,w}$
 $rd \Delta L_w = 21dB$

3 **CELLECTA fon Adhesive**
Acoustic floorboard joint adhesive
Bottle size: 1L / 33m²

Building Regs
≥+5dB

Table 2C.10d

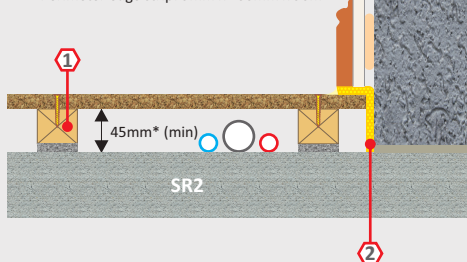
FFT3 Resilient composite standard batten system

1 **DECKfon® Batten 45**

Standard acoustic batten: 50mm x 45mm x 2400mm
*Height indicated when floor is loaded to 25kg/m²

2 **YELOfon® ES5/100**

Perimeter edge strip: 5mm x 100mm x 50m



Airborne
55dB $D_{nT,w} + C_{tr}$

Impact
45dB $L_{nT,w}$
 $rd \Delta L_w = 25dB$

Building Regs
≥+8dB

BBA VERIFIED RD DATA

Additional item required to complete treatment: 18mm (min) tongue & groove flooring board

Construction notes

Ceiling treatments detailed can be used with any FFT listed in Table 2C.10b-f. Slab/levelling screed must be to SR2 Standard when adopting FFT1, 3, 4 or 5. No services should be installed within the treatment when adopting FFT5. Materials must be installed in accordance with manufacturers' and Robust Detail instructions to achieve required acoustic performance values. Wall treatments MUST be isolated from the floating floor with YELOfon ES or FS perimeter flanking strip.