

Steel-concrete composite separating floor

Robust Detail E-FS-1 / V-FS-1

CELLECTA dry laid resilient systems incorporating underfloor heating
In-situ concrete slab supported by profiled metal deck

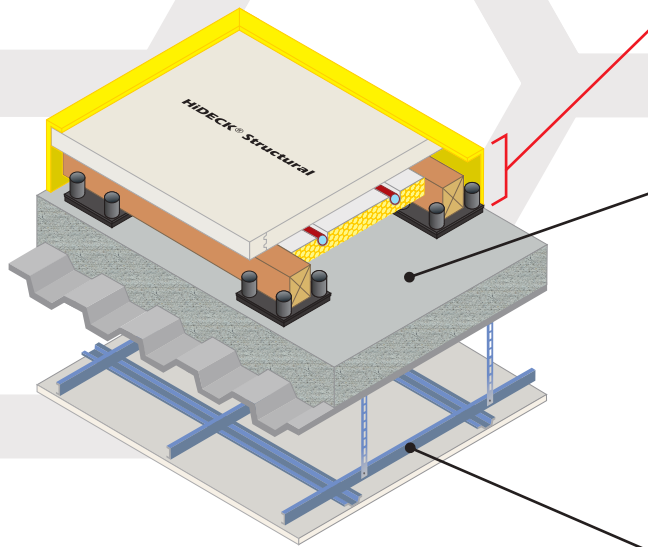


Fig. 2S.02

**Floating floor
acoustic treatment
incorporating UFH
options**

FFT2 - CELLECTA Gobi® cradle & batten system incorporating UFH
FFT4 - CELLECTA Mojave® platform floor system incorporating UFH

Structural floor

In-situ concrete slab supported by profiled metal decking:

- “Shallow” or “deep” profiled metal decking
- Overall distance from top surface of concrete to underside of ceiling treatment 300mm (min)
- Concrete thickness 80mm (min) at shallowest point and 130mm (min) at deepest point
- Concrete density 2200kg/m³ (min)

Ceiling

See Table 2S.02a for ceiling treatment options

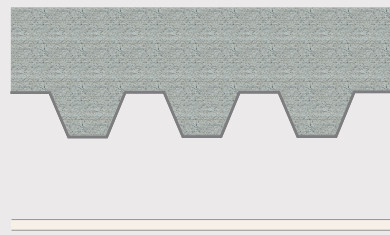
FASTRACKCAD
ARCHITECTURAL CAD DATABASES

n55Plus

b Available on
bimstore.co

Table 2S.02a

Ceiling Treatment Options



Any ceiling system
One layer of nominal 8kg/m² gypsum based board
300mm (min)

Construction notes

Ceiling treatments detailed can be used with any FFT listed in Table 2S.02b-c.
Slab/levelling screed must be to SR2 Standard when adopting the **Mojave** system.
Materials must be installed in accordance with manufacturers' and Robust Detail instructions to achieve required acoustic performance values. Wall treatments MUST be isolated from the floating floor with **YELOfon ES** or **F5** perimeter flanking strip.

Acoustic Performance

Rd impact performance values quoted were conducted at Sound Research Laboratories (UKAS ref. 0444) in accordance with BS EN ISO 10140-3 and BS EN ISO 10140-4 and rated in accordance with BS EN ISO 717-2:2013 as detailed in Appendix D of the Robust Details hand book (minimum value required *rd ΔL_n* = 17dB).
PCT values quoted are typical, based on the treatment being installed correctly and pre-completion tested, with airborne performance tested in accordance with BS EN ISO 140-4:1998 and impact performance tested in accordance with BS EN ISO 140-7: 1998.

Third Party Accreditation and Approvals

RD
Compliant
Treatments
BBA
VERIFIED
RD DATA

NHBC
LABC warranty
Premier Guarantee
Accepted

bmtrada
2015

GWP
<5

100%
Recyclable
Recycled

zero
ODP



Un-even sub-floor

Table 2S.02b

FFT2 Dry laid resilient cradle and batten levelling system incorporating underfloor heating

CELLECTA Gobi® C2-25

Components

1 HiDECK® Structural 25⁽¹⁾

High conductivity structural board:
25mm x 600mm x 1200mm
Weight: 31.25kg/m²
Thermal resistance: 0.0625m²K/W

A CELLECTA Pro Adhesive

HiDECK joint adhesive
Bottle size: 1L / 16m² coverage

2 CELLECTA softwood timber batten

Standard dimensions⁽²⁾: 40, 65mm x 45mm x 2400mm
Chain of custody: PEFC & FSC

3 RUBBERfon® Cradles

Dimensions: 10mm high x 100mm x 100mm
Levelling packers: 2, 3, 5mm
Stackable elevation blocks: 15, 30mm

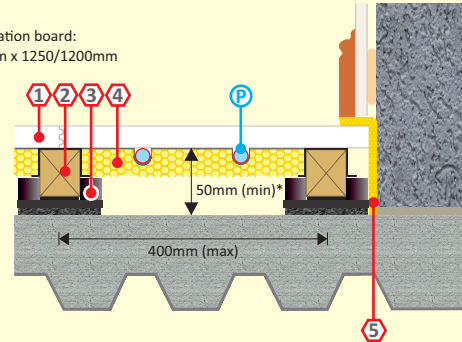
4 XFLO® JB-FF

Foil faced high strength routed XPS insulation board:
Dimensions: 30, 40, 50mm x 300/340mm x 1250/1200mm
Pipe centre: 150, 200, 300mm
Pipe bore size (OD): 10 - 20mm
(manufactured to suit)

5 YELOfon® ES5/120

Perimeter edge strip:
5mm x 120mm x 50mm

P UFH water pipe (by others)



Airborne
54dB $D_{nT,w} + C_{tr}$

Impact
44dB $L_{nT,w}$
 $rd \Delta L_w = 25dB$

Building Regs
 $\geq +8dB$



⁽¹⁾ 28 & 30mm also available to satisfy higher non-domestic loading conditions.

⁽²⁾ Other height battens available upon request.

*Height indicated when floor is loaded to 25kg/m²

Level sub-floor (laid to SR2 standard)

Table 2S.02c

FFT4 Dry laid resilient overlay platform floor system incorporating UFH

CELLECTA Mojave® S1-10

Dry laid acoustic treatment incorporating underfloor heating system

1 ScreedBoard® 20

High conductivity overlay board:
Dimensions: 20mm x 600mm x 1200mm
Weight: 25kg/m² / 18.00kg/board
Thermal resistance: 0.05m²K/W

A CELLECTA Pro Adhesive

ScreedBoard joint adhesive
Bottle size: 1L / 33m² coverage

2 ULTRAplate

Aluminium heat diffuser plate (to suit pipe installed):
Dimensions: 130mm x 1000mm

3 XFLO® 250, 300, 500

High compressive strength routed XPS insulation board:
Dimensions: 15-75mm x 600mm x 1200/2500mm
Compressive strengths available: 250, 300, 500kPa
Pipe centre: 150, 200, 300mm
Pipe bore size (OD): 10 - 20mm (manufactured to suit)

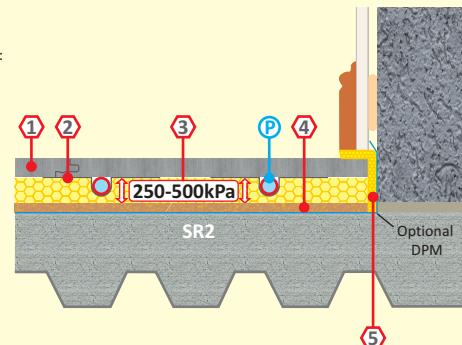
4 FIBREfon® 10

High compressive strength resilient layer:
Dimensions: 10mm x 600mm x 1200mm
Weight: 2.20kg/m² / 1.58kg/board

5 YELOfon® ES5/120

Perimeter edge strip:
5mm x 120mm x 50mm

P UFH water pipe (by others)



Airborne
54dB $D_{nT,w} + C_{tr}$

Impact
41dB $L_{nT,w}$
 $rd \Delta L_w = 28dB$

Building Regs
 $\geq +8dB$

