

Steel-concrete composite separating floor

Robust Detail E-FS-1 / V-FS-1

CELLECTA floating floor treatment laid on in-situ concrete slab supported by profiled metal deck

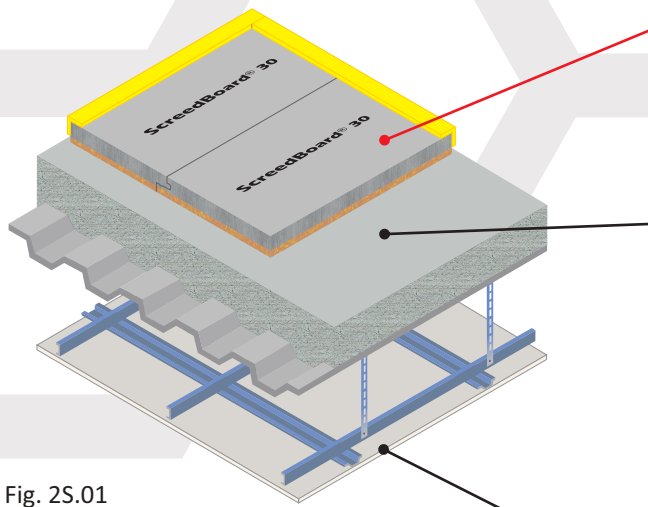


Fig. 2S.01

Floating floor acoustic treatment options

- FFT1 - CELLECTA DECKfon® Batten 70
- FFT2 - CELLECTA RUBBERfon® Cradles
- FFT3 - CELLECTA DECKfon® Batten 45
- FFT4 - CELLECTA ScreedBoard® 30
- FFT5 - CELLECTA FIBREfon® 12C/21C/28C

Structural floor

In-situ concrete slab supported by profiled metal decking:

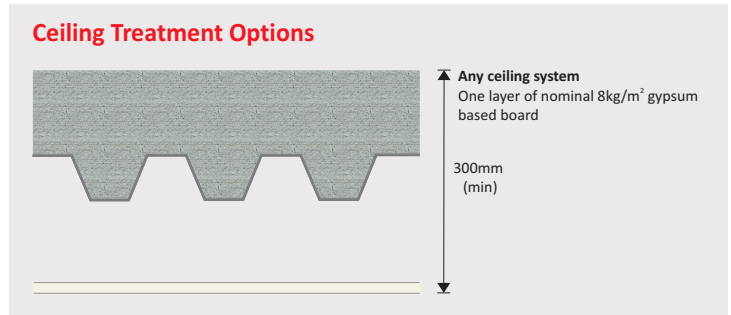
- “Shallow” or “deep” profiled metal decking
- Overall distance from top surface of concrete to underside of ceiling treatment 300mm (min)
- Concrete thickness 80mm (min) at shallowest point and 130mm (min) at deepest point
- Concrete density 2200kg/m³ (min)

Ceiling

See Table 2S.01a for ceiling treatment options



Table 2S.01a



Acoustic Performance

Rd impact performance values quoted were conducted at Sound Research Laboratories (UKAS ref. 0444) in accordance with BS EN ISO 10140-3 and BS EN ISO 10140-4 and rated in accordance with BS EN ISO 717-2:2013 as detailed in Appendix D of the Robust Details hand book (minimum value required $rd \Delta L_w = 17dB$).
PCT values quoted are typical, based on the treatment being installed correctly and pre-completion tested, with airborne performance tested in accordance with BS EN ISO 140-4:1998 and impact performance tested in accordance with BS EN ISO 140-7: 1998.

Third Party Accreditation and Approvals



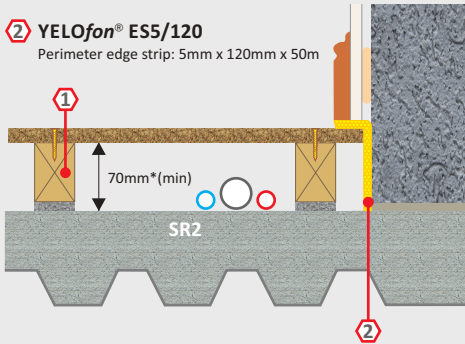
Environmental Credentials



Table 2S.01b

FFT1 Resilient composite deep batten system

- 1 **DECKfon® Batten 70**
Deep acoustic batten: 75mm x 45mm x 2400mm
*Height indicated when floor is loaded to 25kg/m²
- 2 **YELOfon® ESS/120**
Perimeter edge strip: 5mm x 120mm x 50m



Airborne
56dB $D_{nT,w} + C_{tr}$

Impact
42dB $L_{nT,w}$
 $rd \Delta L_w = 27dB$

Building Regs
≥+8dB

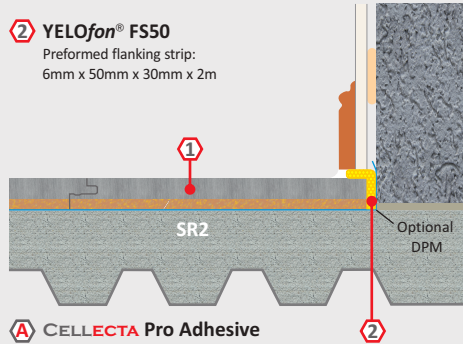
BBA VERIFIED RD DATA

Additional item required to complete treatment: 18mm (min) tongue & groove flooring board

Table 2S.01e

FFT4 Resilient overlay platform floor system

- 1 **ScreedBoard® 30** high performance, dense acoustic composite overlay board
Dimensions: 30mm x 600mm x 1200mm
Weight: 27.20kg/m² / 19.58kg/board
- 2 **YELOfon® FS50**
Preformed flanking strip:
6mm x 50mm x 30mm x 2m



Airborne
54dB $D_{nT,w} + C_{tr}$

Impact
47dB $L_{nT,w}$
 $rd \Delta L_w = 22dB$

Building Regs
≥+8dB

CLASS Bfl, S1 BS EN13501-1

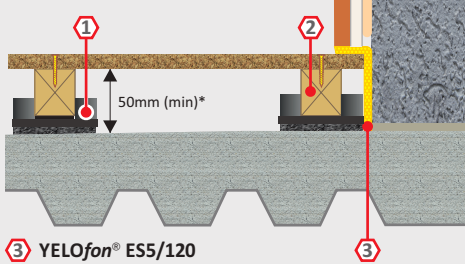
- A **CELLECTA Pro Adhesive**
ScreedBoard joint adhesive
Bottle size: 1L / 33m²

Additional item required: ScreedBoard fixing tools

Table 2S.01c

FFT2 Resilient cradle and batten levelling system

- 1 **RUBBERfon® Cradles**
10mm high x 100mm x 100mm
Levelling packers: 2, 3 & 5mm
Elevation blocks: 15 & 30mm
- 2 **CELLECTA softwood timber batten**
Standard dimensions: 40, 65mm⁽²⁾ x 45mm x 2400mm



Airborne
54dB $D_{nT,w} + C_{tr}$

Impact
44dB $L_{nT,w}$
 $rd \Delta L_w = 25dB$

Building Regs
≥+8dB

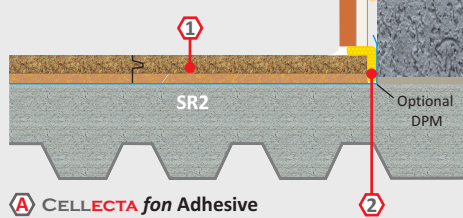
- 3 **YELOfon® ESS/120**
Perimeter edge strip: 5mm x 120mm x 50m

Additional item required to complete treatment: 18mm (min) tongue & groove flooring board.
⁽²⁾ Other height battens available upon request. *Height indicated when floor is loaded to 25kg/m²

Table 2S.01f

FFT5 Resilient shallow overlay platform floor system

- 1 **FIBREfon® 12C, 21C, 28C**
12C: 12mm x 600mm x 2400mm
21C: 21mm x 600mm x 2400mm
28C: 28mm x 600mm x 2400mm
- 2 **12C: YELOfon® ES5/60**
Perimeter edge strip: 5mm x 60mm x 50m
21C, 28C: YELOfon® FS30
Pre-formed flanking strip:
6mm x 30mm x 30mm x 2m



12C Airborne
51dB $D_{nT,w} + C_{tr}$

12C Impact
48dB $L_{nT,w}$
 $rd \Delta L_w = 21dB$

21C Airborne
52dB $D_{nT,w} + C_{tr}$

21C Impact
51dB $L_{nT,w}$
 $rd \Delta L_w = 18dB$

28C Airborne
52dB $D_{nT,w} + C_{tr}$

28C Impact
48dB $L_{nT,w}$
 $rd \Delta L_w = 21dB$

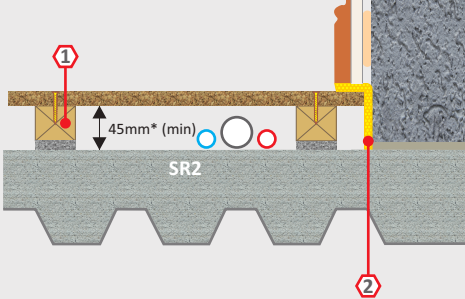
- A **CELLECTA fon Adhesive**
Floorboard joint adhesive
Bottle size: 1L / 33m²

Building Regs
≥+8dB

Table 2S.01d

FFT3 Resilient composite standard batten system

- 1 **DECKfon® Batten 45**
Standard acoustic batten: 50mm x 45mm x 2400mm
*Height indicated when floor is loaded to 25kg/m²
- 2 **YELOfon® ESS/100**
Perimeter edge strip: 5mm x 100mm x 50m



Airborne
54dB $D_{nT,w} + C_{tr}$

Impact
44dB $L_{nT,w}$
 $rd \Delta L_w = 25dB$

Building Regs
≥+8dB

BBA VERIFIED RD DATA

Additional item required to complete treatment: 18mm (min) tongue & groove flooring grade

Construction notes

Ceiling treatments detailed can be used with any FFT listed in Table 2S.01b-f. Slab/levelling screed must be to SR2 Standard when adopting FFT1, 3, 4 or 5. No services should be installed within the treatment when adopting FFT5. Materials must be installed in accordance with manufacturers' and Robust Detail instructions to achieve required acoustic performance values. Wall treatments MUST be isolated from the floating floor with YELOfon ES or FS perimeter flanking strip.