

# Separating floor - Steel-concrete composite

# Robust Detail E-FS-1

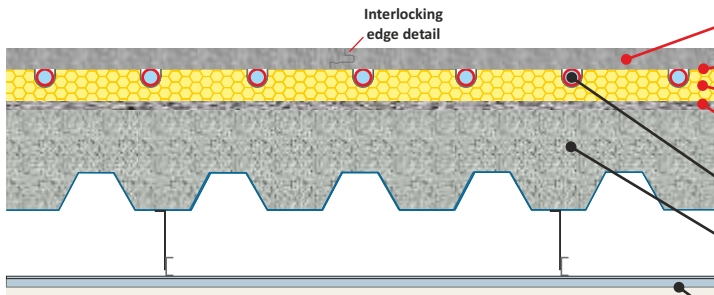
Underfloor heating pipe inserted into **CELLECTA XFLO** underfloor heating insulation boards

**CELLECTA ScreedBoard 20** laid over UFH boards

**CELLECTA FIBREfon 8** resilient layer laid on levelled structural floor

WU9.ssc5

**DRY System**



**CELLECTA ScreedBoard 20**  
Highly conductive interlocking floorboard

**CELLECTA ULTRAplate 0.5**  
Aluminium heat diffuser plate manufactured to suit pipe diameter

**CELLECTA XFLO 250/300/500**  
Routed UFH board manufactured to suit pipe diameter and centres

**CELLECTA FIBREfon 8/10** resilient layer

UFH plastic pipe (supplied by others)

In-situ concrete slab supported by profiled steel decking, laid to SR2 standard  
(To structural engineers' and RD specification)

Ceiling treatment

### Typical Acoustic Performance

<b>Airborne:</b>	54dB $D_{nT,w} + C_{tr}$	Building Regulations <b>+ 8dB</b>
<b>Impact:</b>	41dB $L_{nT,w}$ $rd DL_w = 28dB$	

### Compressive strength



### UFH Insulation Board



**CELLECTA's XFLO** boards are manufactured to suit the pipe diameter and spacing required to achieve the desired thermal output. The board's high compressive strength enables it to withstand the rigours of the installation process as well as the long term loads imposed in residential and commercial applications.

### Key Benefits

- High resistance to compression - 250, 300 & 500kPa
- Manufactured to suit pipe and spacing required
- Works in conjunction with acoustic treatments
- Promotes outstanding thermal output

### Physical Properties

		XFLO		
		250	300	500
		High strength UFH board	High strength UFH board	Ultra strength UFH board
Strength at 10% compression	kPa	250	300	500
Thermal conductivity	-	0.033	0.033 ≤80mm 0.034 >81mm	0.035
Temperature range	°C	-50/+75	-50/+75	-50/+75
Route sizes available (to suit pipe diameter)	mm	10, 12, 14, 15, 16, 18, 20	10, 12, 14, 15, 16, 18, 20	10, 12, 14, 15, 16, 18, 20
Pipe centres	mm	150, 200, 300	150, 200, 300	150, 200, 300
Board size	mm	600 x 2500	600 x 2500	600 x 1200* 600 x 1250
Thickness* (other sizes manufactured to order)	mm	20, 25, 30, 35	40, 50, 60, 75	15*, 18*, 50, 60, 75

### Overlay Board

**FFT4**

### ScreedBoard® 20

Interlocking high conductivity overlay board

**Thickness:** 20mm

**Board size:** 600 x 1200mm

**Weight:** 25kg/m<sup>2</sup> / 18kg per sheet

**Thermal resistance:** 0.05m<sup>2</sup>k/W

### Heat Diffuser

### ULTRAplate 0.5

High performance pressed aluminium diffuser plate

**Plate thickness:** 0.5mm

**Plate length:** 1000mm

**To suite pipe sizes:** 10, 12, 14, 15, 16, 20mm

### Resilient Layer Options

### FIBREfon® 8/10

High performance acoustic fleece / fibreboard

**Dimensions:** 8mm/10mm x 600mm x 1200mm

**Weight:** 8mm - 1kg/m<sup>2</sup> / 10mm - 2.36kg/m<sup>2</sup>

### Perimeter Edge Strip

### YELOfon® ES5/120

Closed-cell extruded polyethylene edge strip

**Thickness:** 5mm x 120mm x 50m

### Accreditation & Approvals



### Environmental Credentials

