

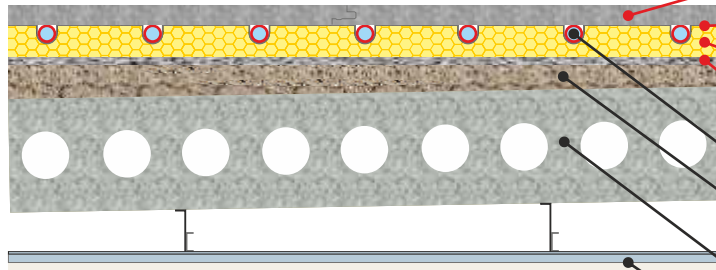
Separating floor - Pre-cast concrete plank

Robust Detail E-FC-1

WU9.scp3

DRY
System

Underfloor heating pipe inserted into **CELLECTA XFLO** underfloor heating insulation boards
CELLECTA ScreedBoard 20 laid over UFH boards
CELLECTA FIBREfon 8 resilient layer laid on levelled structural floor



CELLECTA ScreedBoard 20
Highly conductive interlocking floorboard

CELLECTA ULTRAplate 0.5
Aluminium heat diffuser plate manufactured to suit pipe diameter

CELLECTA XFLO 250/300/500
Routed UFH board manufactured to suit pipe diameter and centres

CELLECTA FIBREfon 8/10 resilient layer

UFH plastic pipe (supplied by others)

40mm (min) levelling screed applied to floor planks to SR2 (min) standard

Pre-cast concrete floor plank
(To structural engineers' and RD specifications)

Ceiling treatment (To RD specifications)

Typical Acoustic Performance

Airborne:	52dB $D_{nT,w} + C_{tr}$	Building Regulations
Impact:	46dB $L_{nT,w}$ $rd\ DL_w = 28dB$	+ 5dB

Compressive strength

250 - 500kPa

UFH Insulation Board



CELLECTA's XFLO boards are manufactured to suit the pipe diameter and spacing required to achieve the desired thermal output. The board's high compressive strength enables it to withstand the rigours of the installation process as well as the long term loads imposed in residential and commercial applications.

Key Benefits

- High resistance to compression - 250, 300 & 500kPa
- Manufactured to suit pipe and spacing required
- Works in conjunction with acoustic treatments
- Outstanding thermal output

Physical Properties

		XFLO		
		250	300	500
		High strength UFH board	High strength UFH board	Ultra strength UFH board
Strength at 10% compression	kPa	250	300	500
Thermal conductivity	W/mk	0.033	0.033 ≤80mm 0.034 >81mm	0.035
Temperature range	°C	-50/+75	-50/+75	-50/+75
Route sizes available (to suit pipe diameter)	mm	10, 12, 14, 15, 16, 18, 20	10, 12, 14, 15, 16, 18, 20	10, 12, 14, 15, 16, 18, 20
Pipe centres	mm	150, 200, 300	150, 200, 300	150, 200, 300
Board size	mm	600 x 2500	600 x 2500	600 x 1200* 600 x 1250
Thickness* (other sizes manufactured to order)	mm	20, 25, 30, 35	40, 50, 60, 75	15*, 18*, 50, 60, 75

Overlay Board

FFT4

ScreedBoard® 20

Interlocking high conductivity overlay board

Thickness: 20mm

Board size: 600 x 1200mm

Weight: 25kg/m² / 18kg per sheet

Thermal resistance: 0.05m²k/W

Heat Diffuser

ULTRAplate 0.5

High performance pressed aluminium diffuser plate

Plate thickness: 0.5mm

Plate length: 1000mm

To suite pipe sizes: 10, 12, 14, 15, 16, 20mm

Resilient Layer Options

FIBREfon® 8/10

High performance acoustic fleece / fibreboard

Dimensions: 8mm/10mm x 600mm x 1200mm

Weight: 8mm - 1kg/m² / 10mm - 2.36kg/m²

Perimeter Edge Strip

YELOfon® ES5/120

Closed-cell extruded polyethylene edge strip

Thickness: 5mm x 120mm x 50m

Accreditation & Approvals



Environmental Credentials

