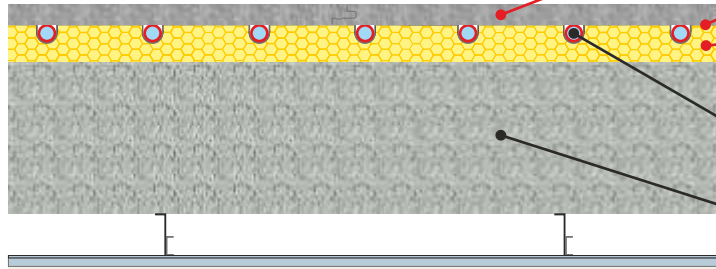


Intermediate floor - In-situ concrete slab

Underfloor heating pipe inserted into **CELLECTA XFLO** underfloor heating insulation boards
CELLECTA ScreedBoard 20 laid over UFH boards
 Dry system

WU9.ic5

DRY
System



250 - 500kPa

CELLECTA ScreedBoard 20
Highly conductive interlocking floorboard

CELLECTA ULTRApate 0.5
Heat diffusion plate manufactured to suit pipe diameter

CELLECTA XFLO 250/300/500
Routed UFH board manufactured to suit pipe diameter and centres

CELLECTA YELOfon ES5 (not shown)
(Thermal, acoustic and expansion gap strip installed around floor perimeter)

UFH plastic pipe (supplied by others)

In-situ concrete slab, laid to SR2 (min) standard (To structural engineers' specification)

UFH Insulation Board



CELLECTA's **XFLO** boards are manufactured to suit the pipe diameter and spacing required to achieve the desired thermal output. The board's high compressive strength enables it to withstand the rigours of the installation process as well as the long term loads imposed in residential and commercial applications.

Key Benefits

- High resistance to compression - 250, 300 & 500kPa
- Manufactured to suit pipe and spacing required
- Works in conjunction with acoustic treatments
- Outstanding thermal output

Physical Properties

		XFLO		
		250	300	500
		High strength UFH board	High strength UFH board	Ultra strength UFH board
Strength at 10% compression	kPa	250	300	500
Thermal conductivity	W/mK	0.033	0.033 ≤80mm 0.034 >81mm	0.035
Temperature range	°C	-50/+75	-50/+75	-50/+75
Route sizes available (to suit pipe diameter)	mm	10, 12, 14, 15, 16, 18, 20	10, 12, 14, 15, 16, 18, 20	10, 12, 14, 15, 16, 18, 20
Pipe centres	mm	150, 200, 300	150, 200, 300	150, 200, 300
Board size	mm	600 x 2500	600 x 2500	600 x 1200* 600 x 1250
Thickness' (other sizes manufactured to order)	mm	20, 25, 30, 35	40, 50, 60, 75	15*, 18*, 50, 60, 75

Overlay Board

ScreedBoard® 20

Interlocking high conductivity overlay board

Thickness: 20mm

Board size: 600 x 1200mm

Weight: 25kg/m² / 18kg per sheet

Thermal resistance: 0.05m²k/W



Heat Diffuser

ULTRApate 0.5

High performance pressed aluminium diffuser plate

Plate thickness: 0.5mm

Plate length: 1000mm

To suite pipe sizes: 10, 12, 14, 15, 16, 20mm

Perimeter Edge Strip

YELOfon® ES5/120

Closed-cell extruded polyethylene edge strip

Thickness: 5mm x 120mm x 50m

Accreditation & Approvals



Environmental Credentials



01634 29-66-77



collecta.co.uk



technical@collecta.co.uk