

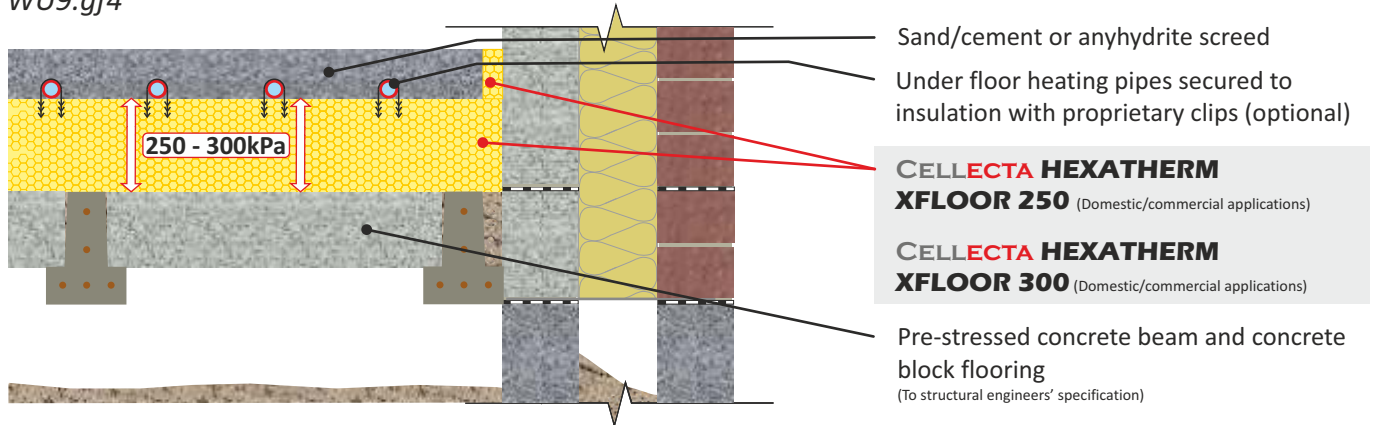
# Suspended ground floor - Beam and concrete block

Underfloor heating pipe clipped to **CELLECTA HEXATHERM XFLOOR** insulation boards

Pipes imbedded within floor screed

Suspended pre-stressed concrete beam and block floor

WU9.gf4



**FASTRACK CAD**  
ARCHITECTURAL CAD DATABASES

**55Plus**

**FASTRACK BIM**  
ARCHITECTURAL BIM DATABASES

## Insulation Board



### **XFLOOR 250/300**

**CELLECTA's XFLOOR 250/300** insulation boards have a high resistance to compression and closed cell structure that provides unrivalled resistance to water absorption, making them ideal for a multitude of domestic, commercial and educational applications.

#### Key Benefits

- Twice the compressive strength of PiR
- Excellent life-long thermal performance
- Closed cell structure
- Very low water absorption
- 100% Recyclable

#### Physical Properties

		<b>XFLOOR 250</b>	<b>XFLOOR 300</b>
Thermal Conductivity EN 12667	W/mK	0.033	0.033 ≤80mm 0.034 >81mm
Strength at 10% compression EN 826	kPa	250	300
Strength at 2% compression EN 1606	kPa	80	125
Long term water absorption by immersion EN 12087	%	>0.7	>0.7
Board size	mm	600 x 2500	600 x 2500
Standard thickness' (other sizes manufactured to order)	mm	20, 25, 30	40, 50, 60, 75 80, 100, 120, 140, 160, 180, 200
Edge profile	-	 Square	 Square

## Typical Thickness of Insulation Required

P/A ratio	<b>HEXATHERM XFLOOR 300 (mm)</b>							
0.7	75	100	120	130	150	180	220	270
0.6	70	90	100	130	150	175	210	270
0.5	70	90	100	120	140	170	210	260
0.4	60	80	100	110	130	160	200	250
0.3	50	70	80	100	120	160	190	240
	0.25	0.22	0.20	0.18	0.16	0.14	0.12	0.10

U-value (W/m<sup>2</sup>K)

Calculated in accordance with ISO 13370

## Third Party Accreditation and Approvals



ISO 9001 N° 10224



BE 009119-1



## Environmental Credentials



01634 29-66-77



collecta.co.uk



technical@collecta.co.uk