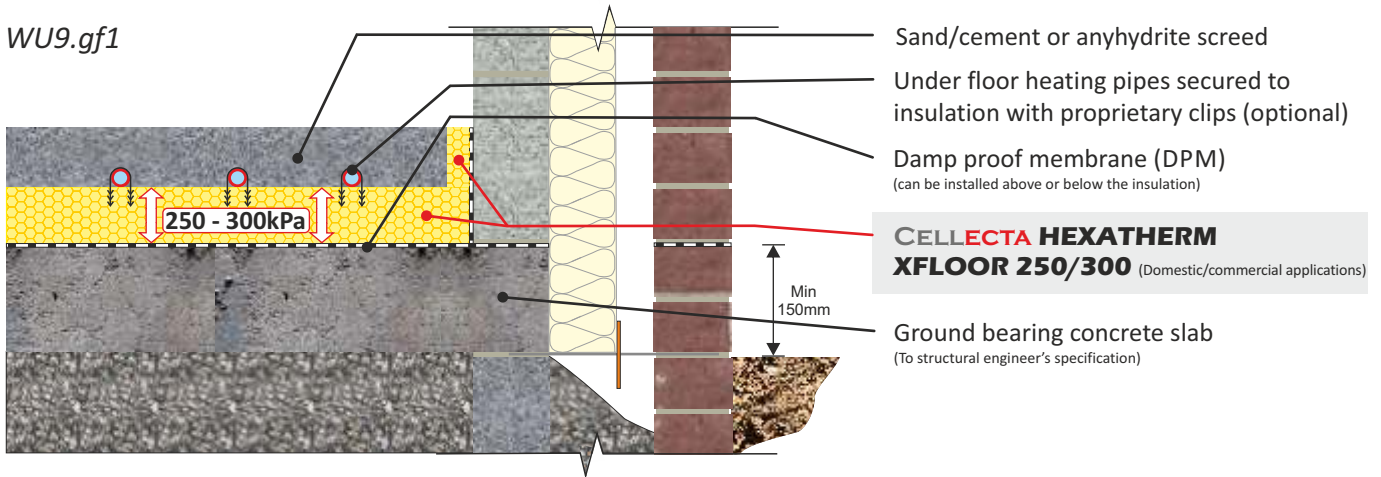


Underfloor heating pipe clipped to **CELLECTA HEXATHERM XFLOOR** insulation boards  
Pipes imbedded withing floor screed



## Insulation Board

### **X**FLOOR 250/300

CELLECTA's **XFLOOR 250/300** insulation boards have a high resistance to compression and closed cell structure that provides unrivalled resistance to water absorption, making them ideal for a multitude of domestic, commercial and educational applications.

#### Key Benefits

- Twice the compressive strength of PiR
- Excellent life-long thermal performance
- Closed cell structure
- Very low water absorption
- 100% Recyclable

#### Physical Properties

		<b>X</b> FLOOR 250	<b>X</b> FLOOR 300
Thermal Conductivity EN 12667	W/mK	0.033	0.033 ≤80mm 0.034 >81mm
Strength at 10% compression EN 826	kPa	250	300
Strength at 2% compression EN 1606	kPa	80	125
Long term water absorption by immersion EN 12087	%	>0.7	>0.7
Board size	mm	600 x 2500	600 x 2500
Standard thickness' (other sizes manufactured to order)	mm	20, 25, 30	- - - 40, 50, 60, 75 80, 100, 120, 140, 160, 180, 200
Edge profile	-	Square	Square

## Typical Thickness of Insulation Required

P/A ratio	<b>HEXATHERM XFLOOR 300 (mm)</b>							
0.7	90	110	125	140	175	190	230	280
0.6	90	110	120	140	160	190	230	280
0.5	75	100	110	130	150	180	220	270
0.4	75	90	100	120	140	170	210	260
0.3	60	75	90	110	130	150	200	250
	0.25	0.22	0.20	0.18	0.16	0.14	0.12	0.10

U-value (W/m<sup>2</sup>K)  
Calculated in accordance with ISO 13370

## Third Party Accreditation and Approvals



ISO 9001 N° 10224



BE 009119-1



## Environmental Credentials

