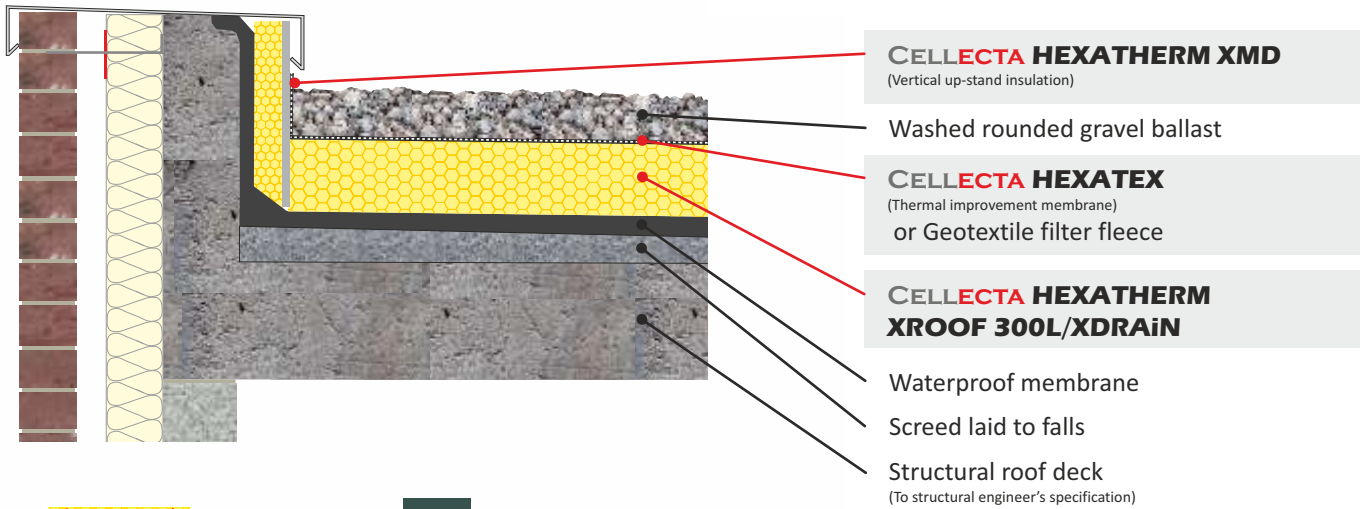


# INVERTED FLAT GREEN ROOF

WT9.vus1

**CELLECTA HEXATHERM XMD** Vertical up-stand insulation board  
 Insulation ballasted with washed rounded gravel  
 Suitable for roofs with and without falls



**FASTRACKCAD**  
ARCHITECTURAL CAD DATABASES



**FASTRACKBIM**  
ARCHITECTURAL BIM DATABASES

## Product Information



CELLECTA's XMD boards have a high impact cementitious facing, life long thermal performance and low water absorption, making them ideal for protecting the vertical up-stand waterproof membrane on an inverted roof.

### Key Benefits

- High Impact facing
- Very low water absorption <0.7%
- Excellent life-long thermal performance
- High compressive strength
- Closed cell structure

### Physical Properties

		XMD
Thermal Conductivity EN 12667	W/mK	0.033 ≤80mm 0.034 >81mm
Strength at 10% compression EN 826	kPa	300
Strength at 2% compression EN 1606	kPa	-50/+75
Long term water absorption by immersion EN 12087	%	>0.7
Board size	mm	600 x 2400
Thickness' available (other sizes manufactured to order)	mm	<b>56, 66</b> <b>81, 86,</b> <b>106, 126</b> <b>146, 166</b>
XMD includes 6mm cementitious facing		
Edge profile	-	 Square

## Typical Thickness of Insulation Required

To determine the exact thickness of insulation required to achieve the desired U-value contact **CELLECTA** for assistance.  
 T. 01634 29-66-77  
 E. technical@cellecta.co.uk

## Third Party Accreditation and Approvals



ISO 9001 N° 10224



BE 009119-1



## Environmental Credentials

