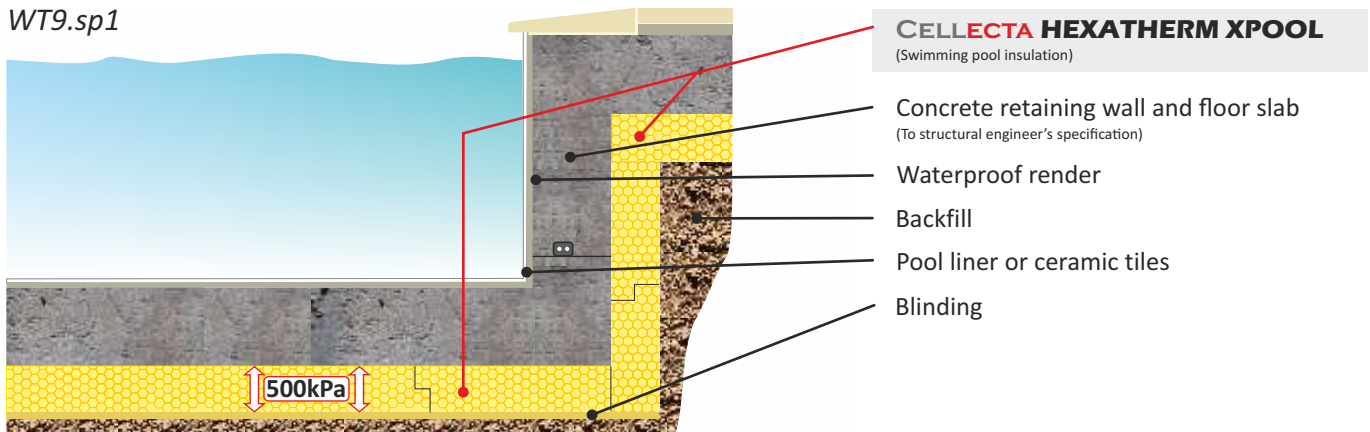


CELLECTA **HEXATHERM XPOOL** insulation installed below slab and external face of the pool walls

WT9.sp1



FASTRACK CAD
ARCHITECTURAL CAD DATABASES

n55Plus

FASTRACK BIM
ARCHITECTURAL BIM DATABASES

Product Information



CELLECTA's XPOOL insulation boards have an ultra high resistance to compression able to withstand long term high static loads, extremely low water absorption and outstanding thermal performance, providing long term energy savings.

Key Benefits

- Ultra high compressive strength 500kPa
- Excellent life-long thermal performance
- Closed cell structure
- Very low water absorption
- 100% Recyclable

Physical Properties

		XPOOL
Thermal Conductivity EN 12667	W/mK	0.035
Strength at 10% compression EN 826	kPa	500
Strength at 2% compression EN 1606	kPa	180
Long term water absorption by immersion EN 12087	%	>0.7
Board size	mm	600 x 1250
Standard thickness' (other sizes manufactured to order)	mm	50, 60, 75, 80, 100, 120, 140, 160, 180, 200
Edge profile	-	Shiplap

Typical Thickness of Insulation Required

P/A ratio	HEXATHERM XPOOL (mm)				
0.7	90	100	120	140	160
0.6	80	100	120	140	160
0.5	75	100	120	140	160
0.4	75	90	100	120	140
0.3	60	80	90	120	140
	0.25	0.22	0.20	0.18	0.16

Notes.
U-values calculated using an average pool depth of 1.5m
Thickness based on insulating both swimming pool walls and floor

U-value (W/m²K)
Calculated in accordance with ISO 13370

Third Party Accreditation and Approvals



ISO 9001 N° 10224



BE 009119-1



Environmental Credentials



Private dwelling, Bournemouth: XPOOL - 100mm