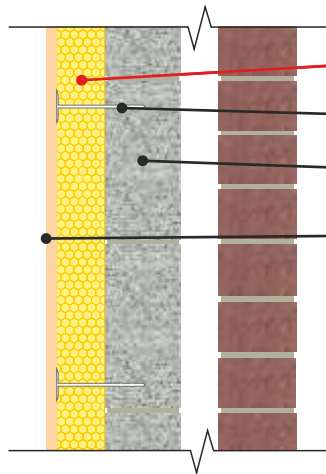


CELLECTA **HEXATHERM XR** thermal insulation installed on internal face of masonry wall
Plaster finish

WT9.iw/2



CELLECTA HEXATHERM XGYP
(Thermal laminate)

Suitable mechanical fixing

Masonry wall

Plaster finish



Product Information

Product Information



CELLECTA XR insulation boards have a roughened face to allow a render to key. They have an excellent thermal performance, closed cell structure and low water absorption, making them ideal for rendering applications.

Key Benefits

- ⊗ Excellent life-long thermal performance
- ⊗ Roughened face
- ⊗ Closed cell structure
- ⊗ Low water absorption
- ⊗ 100% Recyclable

Physical Properties

		XR
Thermal Conductivity EN 12667	≤80mm ≥81mm	W/mK 0.033 0.034
Strength at 10% compression EN 826	≤40mm ≥41mm	kPa 250 300
Temperature range	°C	-50/+75
Long term water absorption by immersion EN 12087	%	>0.7
Board size	mm	600 x 1250 600 x 2500
Thickness' available (other sizes manufactured to order)	mm (+/-0.5)	20, 30, 40, 50, 60 80, 100, 120, 140, 160
Edge profile options	-	Square

Typical Thickness of Insulation Required

To determine the exact thickness of insulation required to achieve the desired U-value contact **CELLECTA** for assistance.

T. 01634 29-66-77

E. technical@collecta.co.uk

Third Party Accreditation and Approvals



ISO 9001 N° 10224



BE 009119-1



Environmental Credentials

