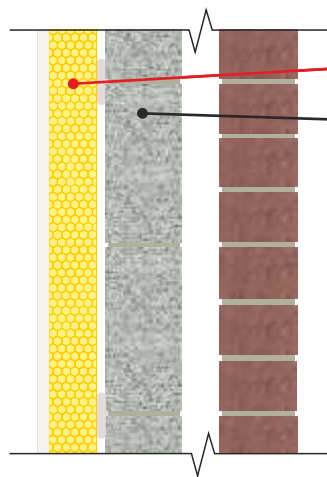


CELLECTA HEXATHERM XGYP thermal laminate installed internally against basement wall
CELLECTA HEXATHERM XFLOOR insulation installed below floating screed

WT9.iw/1



CELLECTA HEXATHERM XGYP
 (Thermal laminate)

Masonry wall

FASTRACK CAD
 ARCHITECTURAL CAD DATABASES

ns5Plus

FASTRACK BIM
 ARCHITECTURAL BIM DATABASES

Product Information





CELLECTA XGYP combine the benefits of **HEXATHERM** high performance thermal insulation with either a square edge (SE) or tapered edge (TE) 12.5mm plasterboard, to produce a laminate that is a quick and easy to install.

Key Benefits

- ⊗ Excellent life-long thermal performance
- ⊗ Available with either S/E or T/B plasterboard facing
- ⊗ Closed cell structure
- ⊗ Quick and easy to install
- 100% Recyclable core

Physical Properties

		XGYP
Thermal Conductivity ≤80mm EN 12667	W/mK	0.033* 0.034*
Strength at 10% compression EN 826	kPa	250* 300*
Temperature range	°C	-50/+75
Long term water absorption by immersion EN 12087	%	>0.7
Board size	mm	1200 x 2400
Thickness* available (other sizes manufactured to order) XGYP includes 12.5mm plasterboard	mm	42, 52, 62, 72, 92 120, 132 152, 172
Edge profile options	-	  S/E & T/E

* Refers to insulation performance

Typical Thickness of Insulation Required

To determine the exact thickness of insulation required to achieve the desired U-value contact **CELLECTA** for assistance.

T. 01634 29-66-77

E. technical@cellecta.co.uk

Third Party Accreditation and Approvals



ISO 9001 N° 10224



BE 009119-1



Environmental Credentials



01634 29-66-77



cellecta.co.uk



technical@cellecta.co.uk