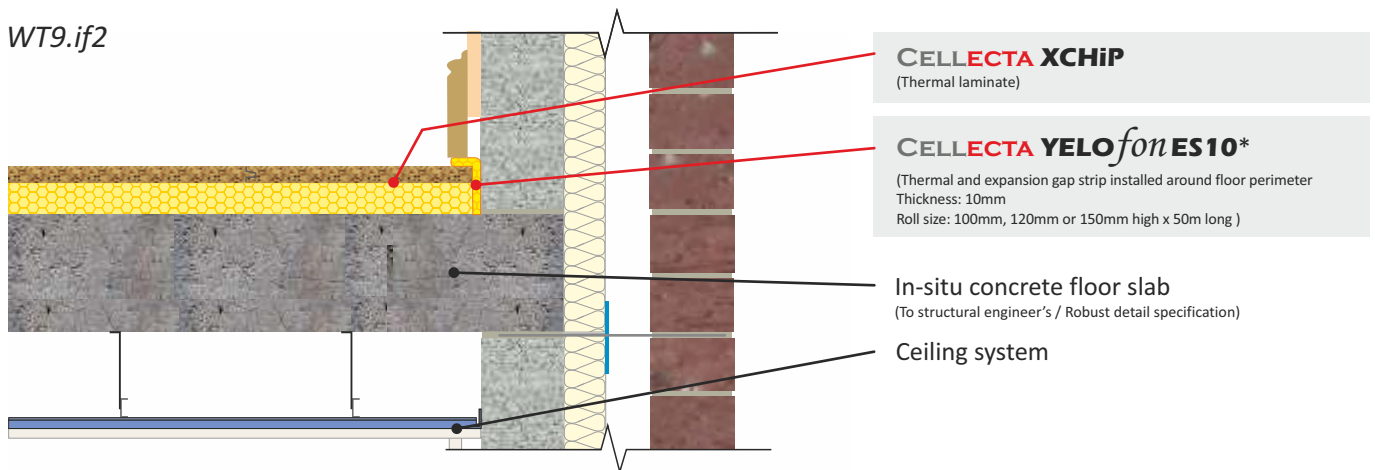


# INTERMEDIATE IN-SITU CONCRETE FLOOR

CELLLECTA XCHiP insulation boards laid on floor slab

WT9.if2



FASTRACK CAD  
ARCHITECTURAL CAD DATABASES

n55Plus

FASTRACK BIM  
ARCHITECTURAL BIM DATABASES

## Product Information




CELLLECTA's XCHiP combines the benefits of HEXATHERM high performance thermal insulation with an 18mm P5 moisture resistant, tongue and groove chipboard to produce a high compressive strength, interlocking floor board.

## Key Benefits

- 2 times the compressive strength of PiR
- Excellent life-long thermal performance
- Interlocking, moisture resistant P5 chipboard facing
- Very low water absorption insulation
- Quick and easy to install

## Physical Properties

		XCHiP
Thermal Conductivity EN 12667	W/mK	0.033 ≤80mm 0.034 >81mm
Strength at 10% compression EN 826	kPa	250 ≤30mm 300 >40mm
Strength at 2% compression EN 1606	kPa	80 ≤30mm 125 >40mm
Long term water absorption by immersion EN 12087	%	>0.7
Board size	mm	600 x 2400
Thickness' available - including 18mm P5 moisture resistant T & G chipboard (other sizes manufactured to order)	mm	38, 43, 48 58, 68, 93, 98, 118, 138, 158, 178
Edge profile	-	 T&G

## Third Party Accreditation and Approvals



ISO 9001 N° 10224



BE 009119-1



## Environmental Credentials



01634 29-66-77



collecta.co.uk



technical@collecta.co.uk