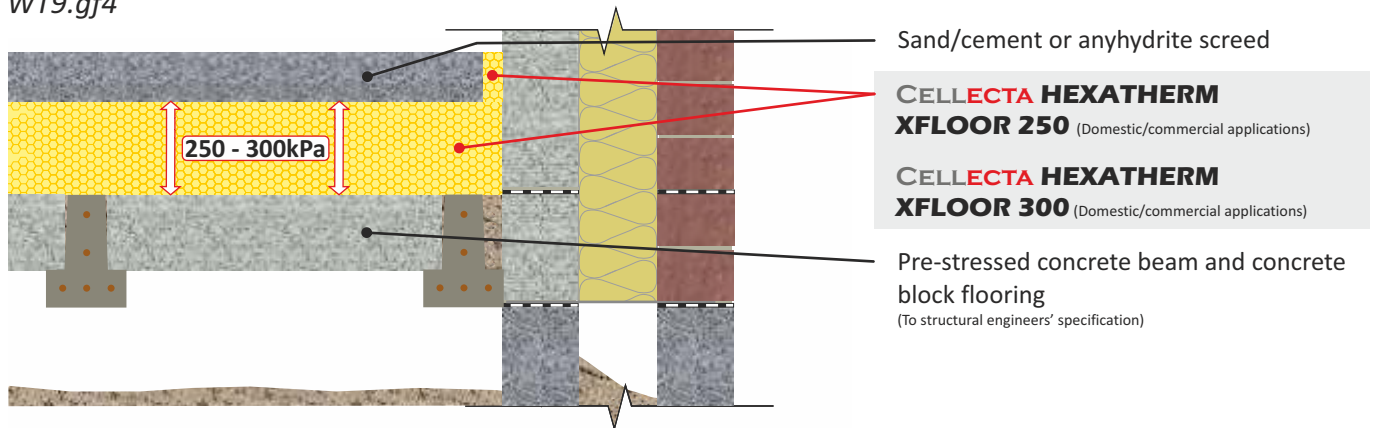


# SUSPENDED BEAM AND CONCRETE BLOCK GROUND FLOOR

**CELLECTA HEXATHERM XFLOOR** insulation installed below floating screed  
Suspended pre-stressed concrete beam and block floor

WT9.gf4



**FASTRACK CAD**  
ARCHITECTURAL CAD DATABASES

**55Plus**

**FASTRACK BIM**  
ARCHITECTURAL BIM DATABASES

## Product Information

### XFLOOR 250/300

CELLECTA's XFLOOR 250/300 insulation boards have a high resistance to compression and closed cell structure that provides unrivalled resistance to water absorption, making them ideal for a multitude of domestic, commercial and educational applications.

## Key Benefits

- Twice the compressive strength of PiR
- Excellent life-long thermal performance
- Closed cell structure
- Very low water absorption
- 100% Recyclable

## Physical Properties

|   |      | XFLOOR 250 | XFLOOR 300                                       |
|---|------|------------|--|
| Thermal Conductivity EN 12667                           | W/mK | 0.033      | 0.033 ≤80mm<br>0.034 >81mm                       |
| Strength at 10% compression EN 826                      | kPa  | 250        | 300  |
| Strength at 2% compression EN 1606                      | kPa  | 80         | 125  |
| Long term water absorption by immersion EN 12087        | %    | >0.7       | >0.7   |
| Board size  | mm   | 600 x 2500 | 600 x 2500                                       |
| Standard thickness' (other sizes manufactured to order) | mm   | 20, 25, 30 | 40, 50, 60, 75, 80, 100, 120, 140, 160, 180, 200 |
| Edge profile  | -    | Square     | Square   |

## Typical Thickness of Insulation Required

| P/A ratio | HEXATHERM XFLOOR 300 (mm) |      |      |      |      |      |      |      |
|-----------|---------------------------|------|------|------|------|------|------|------|
| 0.7       | 75                        | 100  | 120  | 130  | 150  | 180  | 220  | 270  |
| 0.6       | 70                        | 90   | 100  | 130  | 150  | 175  | 210  | 270  |
| 0.5       | 70                        | 90   | 100  | 120  | 140  | 170  | 210  | 260  |
| 0.4       | 60                        | 80   | 100  | 110  | 130  | 160  | 200  | 250  |
| 0.3       | 50                        | 70   | 80   | 100  | 120  | 160  | 190  | 240  |
|           | 0.25                      | 0.22 | 0.20 | 0.18 | 0.16 | 0.14 | 0.12 | 0.10 |

U-value (W/m<sup>2</sup>K)  
Calculated in accordance with ISO 13370

## Third Party Accreditation and Approvals



## Environmental Credentials



01634 29-66-77



collecta.co.uk



technical@collecta.co.uk