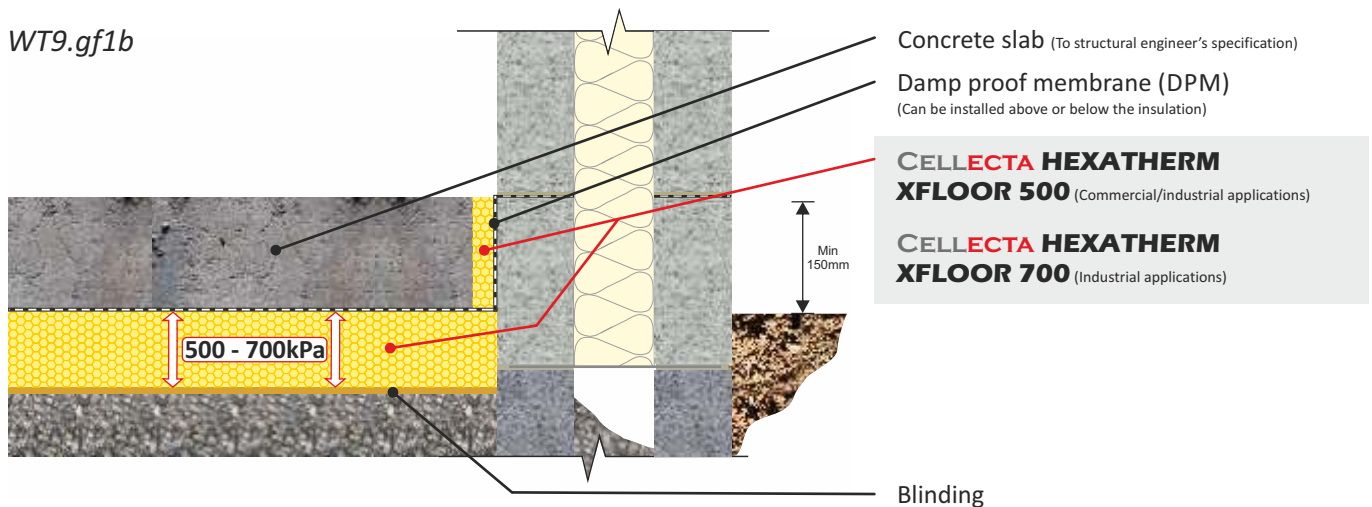


GROUND BEARING CONCRETE FLOOR SLAB



CELLECTA HEXATHERM XFLOOR insulation installed below the concrete slab
Commercial/industrial applications

WT9.gf1b



FASTRACK CAD
ARCHITECTURAL CAD DATABASES



FASTRACK BIM
ARCHITECTURAL BIM DATABASES

Product Information

XFLOOR 500/700

CELLECTA's XFLOOR 500/700 insulation boards have an ultra high resistance to compression and closed cell structure that provides unrivalled resistance to water absorption, making them ideal for a multitude of commercial, educational and industrial applications.

Key Benefits

- ⬢ 4 - 5 times the compressive strength of PiR
- ⬢ Excellent life-long thermal performance
- ⬢ Closed cell structure
- ⬢ Very low water absorption
- ⬢ 100% Recyclable

Physical Properties

		XFLOOR 500	XFLOOR 700
Thermal Conductivity EN 12667	W/mK	0.035	0.034 ≤80mm 0.036 >81mm
Strength at 10% compression EN 826	kPa	500	700
Strength at 2% compression EN 1606	kPa	180	250
Long term water absorption by immersion EN 12087	%	>0.7	>0.7
Board size	mm	600 x 1250	600 x 1250
Standard thickness' (other sizes manufactured to order)	mm	50, 60, 75, 80, 100, 120, 140, 160, 180, 200	50, 60, 75, 80, 100, 120, 140, 160, 180, 200
Edge profile	-	Shiplap	Shiplap

Typical Thickness of Insulation Required

P/A ratio	HEXATHERM XFLOOR 500 (mm)							
0.7	90	110	130	150	175	200	240	290
0.6	90	110	120	140	160	190	230	290
0.5	80	100	110	130	160	190	220	275
0.4	75	90	100	120	150	175	210	270
0.3	60	75	90	110	130	160	200	250
	0.25	0.22	0.20	0.18	0.16	0.14	0.12	0.10

U-value (W/m²K)
Calculated in accordance with ISO 13370

Third Party Accreditation and Approvals



Environmental Credentials

