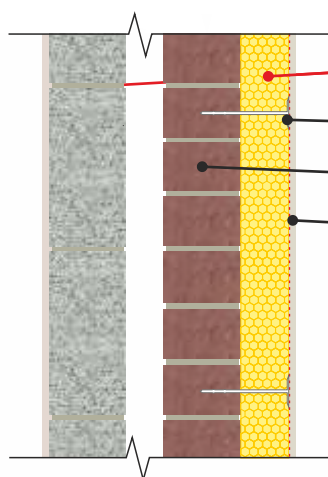


CELLECTA **HEXATHERM XR** thermal insulation installed on external face of masonry wall  
Render finish

WT9.ewl1



**CELLECTA HEXATHERM XGYP**  
(Thermal laminate)

Suitable mechanical fixing

Masonry wall

Render system

**FASTRACK CAD**  
ARCHITECTURAL CAD DATABASES

**plus**

**FASTRACK BIM**  
ARCHITECTURAL BIM DATABASES

## Product Information

## Product Information




**CELLECTA XR** insulation boards have a roughen face to allow a render to key. They have an excellent thermal performance, closed cell structure and low water absorption, making them ideal for rendering applications.

## Key Benefits

- Excellent life-long thermal performance
- Roughened face
- Closed cell structure
- Low water absorption
- 100% Recyclable

## Physical Properties

		<b>XR</b>
Thermal Conductivity $\leq 80\text{mm}$ EN 12667	W/mK	0.033 0.034
Strength at 10% compression EN 826	kPa	250 300
Temperature range	°C	-50/+75
Long term water absorption by immersion EN 12087	%	>0.7
Board size	mm	600 x 1250 600 x 2500
Thickness available (other sizes manufactured to order)	mm (+/-0.5)	20, 30, 40, 50, 60 80, 100, 120, 140, 160
Edge profile options	-	 Square

## Typical Thickness of Insulation Required

To determine the exact thickness of insulation required to achieve the desired U-value contact **CELLECTA** for assistance.

T. 01634 29-66-77

E. technical@cellecta.co.uk

## Third Party Accreditation and Approvals



ISO 9001 N° 10224



BE 009119-1



## Environmental Credentials



01634 29-66-77



cellecta.co.uk



technical@cellecta.co.uk