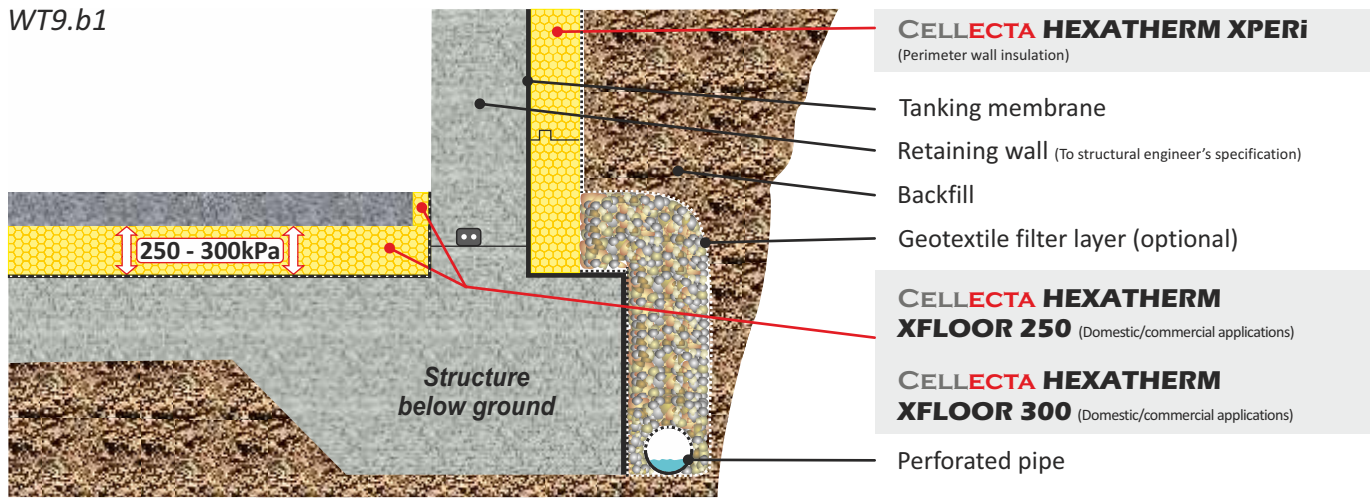


CELLECTA **HEXATHERM XPERi** insulation installed externally against basement wall
 CELLECTA **HEXATHERM XFLOOR** insulation installed below floating screed

WT9.b1



Product Information



Both **CELLECTA XPERi** and **XFLOOR** extruded polystyrene thermal insulation boards have a closed cell structure that provides unrivalled resistance to water absorption and high compressive strength, making them ideal for basement insulating applications.

Key Benefits

- Very low water absorption
- Can be installed externally to protect the DPM
- Closed cell structure < 0.7% water absorption
- High compressive strength
- 100% Recyclable

Physical Properties

		XFLOOR		
		XPERi	250	300
Thermal Conductivity EN 12667 (W/mK)	≤80mm	0.033	0.033	0.033
	≥81mm	0.034	-	0.034
Strength at 10% compression EN 826 (kPa)	≤30mm	250	250	-
	≥40mm	300	-	300
Strength at 2% compression EN 1606 (kPa)	≤30mm	80	80	-
	≥40mm	125	-	125
Long term water absorption by immersion EN 12087 (%)		0.7	0.7	0.7
Temperature range (°C)		-50/+75	-50/+75	-50/+75
Board size (mm)	600 x 2500	600 x 2500	600 x 2500	600 x 2500
	Thickness* (mm) (other sizes manufactured to order)	- - 30 40 50 60 - 80 100 120 140 160 180 200	20 25 30 - - - - - - -	- - - 40 50 60 75 80 100 120 140 160 180 200
Edge profile		T&G	Square	Square

Typical Thickness of Insulation Required

The method of calculating the U-value of a basements is more complex than other applications. To determine the thickness of insulation required contact **CELLECTA** for assistance.

T. 01634 29-66-77

E. technical@cellecta.co.uk

Third Party Accreditation and Approvals



ISO 9001 N° 10224



BE 009119-1



Environmental Credentials



Kings College, Wimbledon: **XPERi** - 160mm & **XFLOOR 250** - 30mm



01634 29-66-77



cellecta.co.uk



technical@cellecta.co.uk