

# New build masonry flanking walls with timber separating floor

CELLECTA **ScreedBoard<sup>(1)</sup>28** laid on timber sub-floor

CELLECTA composite acoustic wall lining system

Suitable for aircrete and aggregate block cavity walls

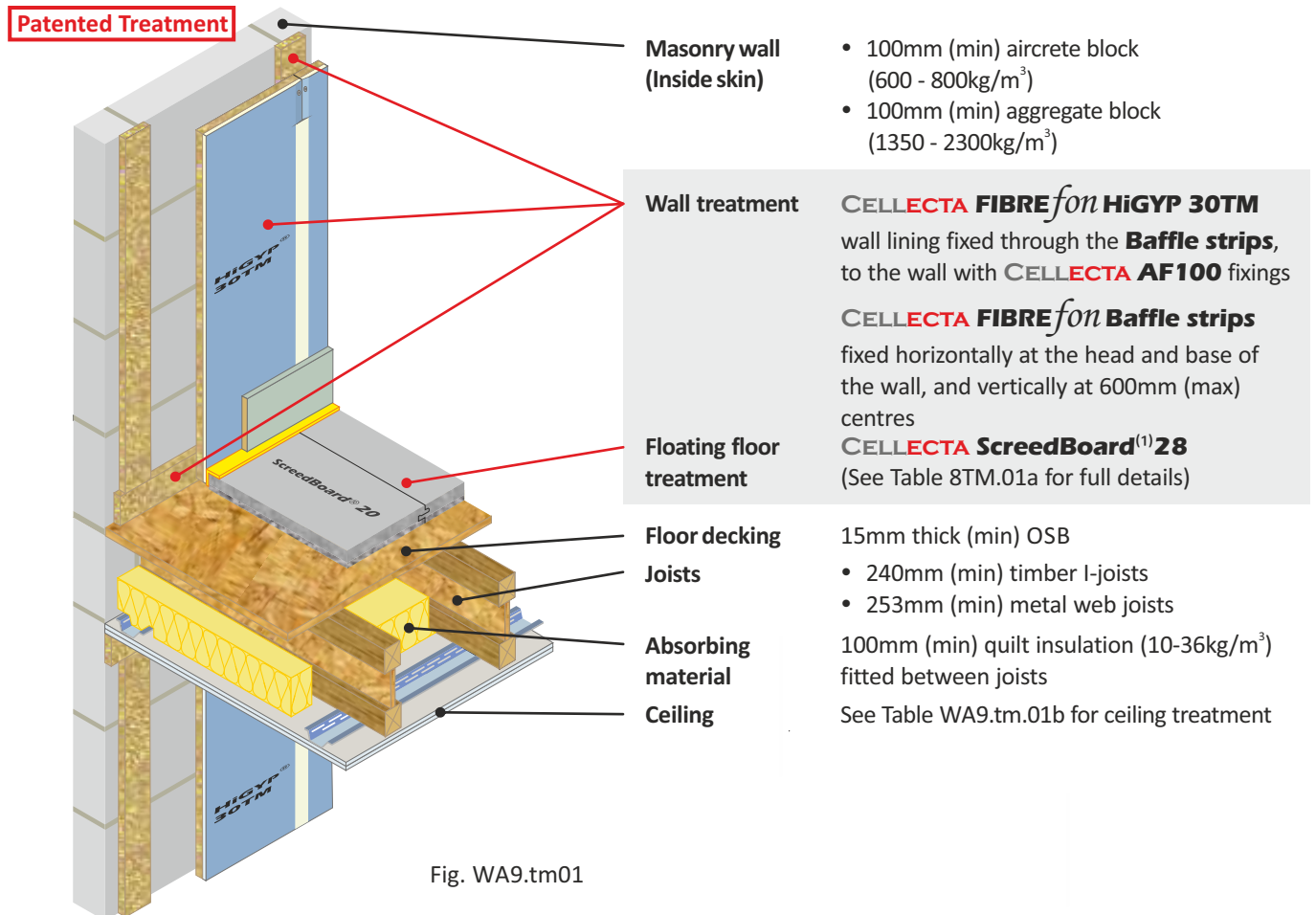


Fig. WA9.tm01

Table WA9.tm.01a

Table WA9.tm.02a

## Installation Detail

### Resilient overlay platform floor system

#### ScreedBoard<sup>(1)</sup>28

Ultra high performance, dense acoustic composite overlay board  
**Dimensions:** 28mm x 600mm x 1200mm  
**Weight:** 26kg/m<sup>2</sup> / 18.72kg/board

#### YELOfon FS50

Profiled perimeter flanking strip  
**Dimensions:** 6mm x 50mm x 30mm x 2m

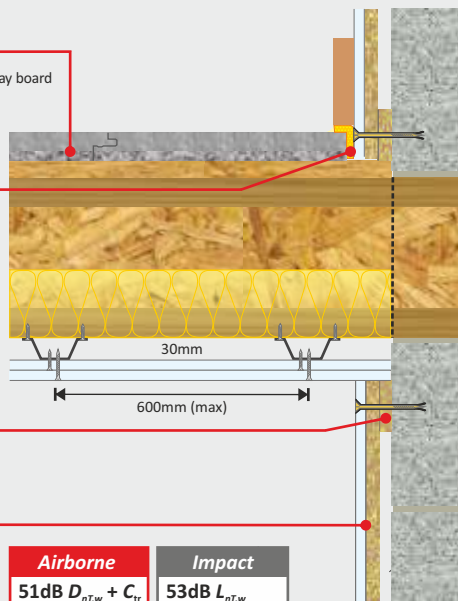
**Additional items required to complete treatment**  
 CELLECTA Pro or SB adhesive - 1litre / 33m<sup>2</sup> coverage  
 CELLECTA AF100 fixings - 100mm long / 8mm Ø  
 100mm (min) quilt insulation (10-36kg/m<sup>3</sup>) fitted in ceiling cavity

#### FIBREfon Baffle Strips

High performance sound absorption strips  
**Dimensions:** 15mm x 75mm x 1200mm

#### HiGYP 30TM

High performance composite acoustic wall lining  
**Dimensions:** 30mm x 1200mm x 2400mm  
**Weight:** 14.90kg/m<sup>2</sup> / 42.91kg/sheet



Airborne	Impact
51dB $D_{nT,w} + C_{tr}$	53dB $L_{nT,w}$

## Ceiling Treatment Options

**Ceiling boards must not penetrate or touch joists**  
 30mm CELLECTA HP30 resilient bars mounted at right angles to the joists at 600mm (max) centres.

### Ceiling treatment

**CT1**-Two layers of gypsum-based board, composed of 19mm (nominal 13.5kg/m<sup>2</sup>) fixed with 32mm screws and 12.5mm (nominal 10kg/m<sup>2</sup>) fixed with 42mm screws, with all joints staggered.

**CT2**-Two layers of gypsum-based board, composed of 15mm (nominal 12.5kg/m<sup>2</sup>) fixed with 25mm screws and a second layer of 15mm (nominal 12.5kg/m<sup>2</sup>) fixed with 42mm screws, with all joints staggered.

### Sacrificial ceiling (optional):

Metal ceiling system with a 150mm (min) void fixed to underside of primary ceiling. One layer of nominal 8kg/m<sup>2</sup> gypsum based board.

### Construction notes

Materials must be installed in accordance with manufacturers' instructions to achieve stated acoustic values. Wall treatments **MUST** be isolated from the floating floor with YELOfon FS50 strip. Ensure services do not come into direct contact with the floor treatment.

## Acoustic Performance

Values quoted are typical and based on the treatment being installed correctly and pre-completion tested (PCT).  
 Airborne performance tested in accordance with BS EN ISO 140-4:1998  
 Impact performance tested in accordance with BS EN ISO 140-7:1998

## Third Party Approvals and Certification



## Environmental Credentials



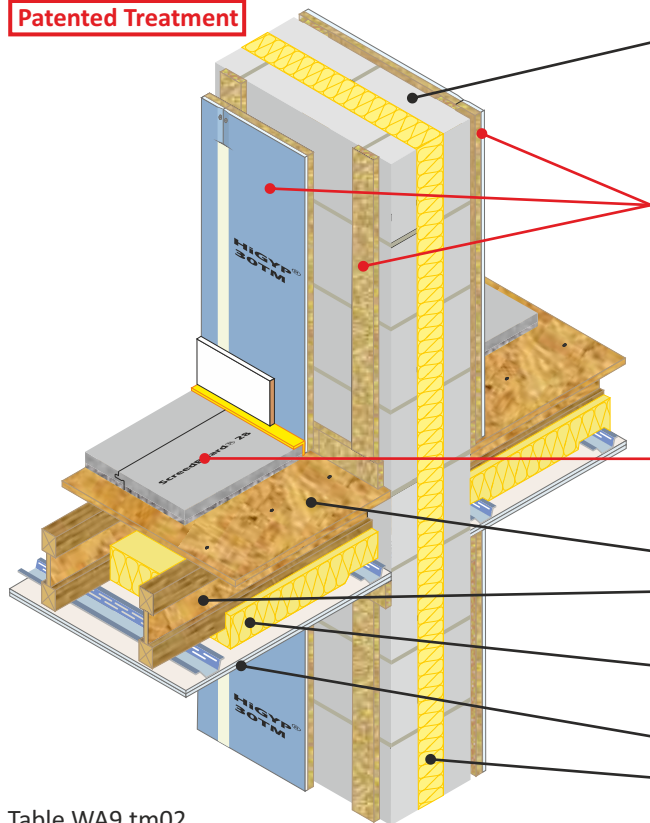
# New build masonry separating wall with timber separating floor

CELLECTA **ScreedBoard<sup>(1)</sup>28** laid on timber sub-floor

CELLECTA composite acoustic wall lining system

Suitable for aircrete and aggregate block cavity walls

## Patented Treatment



**Masonry wall  
(Inside skin)**

- 100mm (min) aircrete block (600 - 800kg/m<sup>3</sup>)
- 100mm (min) aggregate block (1350 - 2300kg/m<sup>3</sup>)

**Wall treatment**

**CELLECTA FIBREfon HiGYP 30TM** wall lining fixed through the **Baffle strips**, to the wall with **CELLECTA AF100** fixings

**CELLECTA FIBREfon Baffle strips** fixed horizontally at the head and base of the wall, and vertically at 600mm (max) centres

**Floating floor treatment**

**CELLECTA ScreedBoard<sup>(1)</sup>28** (See Table 8TM.02a for full details)

**Floor decking**

15mm thick (min) OSB

**Joists**

- 240mm (min) timber I-joists
- 253mm (min) metal web joists

**Absorbing material**

100mm (min) quilt insulation (10-36kg/m<sup>3</sup>) fitted between joists

**Ceiling**

See Table WA9.tm02b for ceiling treatment options

**Cavity insulation**

75mm (min) full fill mineral wool to address thermal bypass effect (10-36kg/m<sup>3</sup>)

Table WA9.tm02

Table WA9.tm02a

## Installation Detail

### Resilient overlay platform floor system

#### ScreedBoard<sup>(1)</sup>28

Ultra high performance, dense acoustic composite overlay board  
Dimensions: 28mm x 600mm x 1200mm  
Weight: 26kg/m<sup>2</sup> / 18.72kg/board

#### YELOfon FS50

Profiled perimeter flanking strip  
Dimensions: 6mm x 50mm x 30mm x 2m

**Additional items required to complete treatment**  
CELLECTA Pro or SB adhesive - 1litre / 33m<sup>2</sup> coverage  
CELLECTA AF100 fixings - 100mm long / 8mm Ø  
100mm (min) quilt insulation (10-36kg/m<sup>3</sup>) fitted in ceiling cavity

#### FIBREfon Baffle Strips

High performance sound absorption strips  
Dimensions: 15mm x 75mm x 1200mm

#### HiGYP 30TM

High performance composite acoustic wall lining  
Dimensions: 30mm x 1200mm x 2400mm  
Weight: 14.90kg/m<sup>2</sup> / 42.91kg/sheet

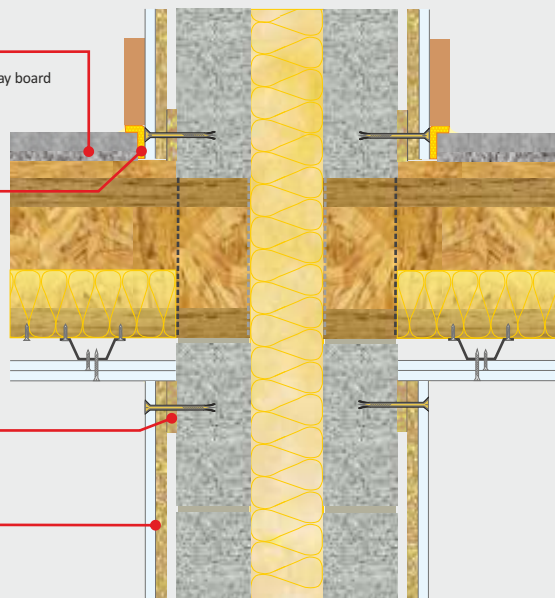


Table WA9.tm02b

## Ceiling Treatment Options

Ceiling boards must not penetrate or touch joists  
30mm CELLECTA HP30 resilient bars mounted at right angles to the joists at 600mm (max) centres.

### Ceiling treatment

**CT1**-Two layers of gypsum-based board, composed of 19mm (nominal 13.5kg/m<sup>2</sup>) fixed with 32mm screws and 12.5mm (nominal 10kg/m<sup>2</sup>) fixed with 42mm screws, with all joints staggered.

**CT2**-Two layers of gypsum-based board, composed of 15mm (nominal 12.5kg/m<sup>2</sup>) fixed with 25mm screws and a second layer of 15mm (nominal 12.5kg/m<sup>2</sup>) fixed with 42mm screws, with all joints staggered.

### Sacrificial ceiling (optional):

Metal ceiling system with a 150mm (min) void fixed to underside of primary ceiling. One layer of nominal 8kg/m<sup>2</sup> gypsum based board.

### Separating wall

#### Airborne

52dB  $D_{nT,w} + C_{tr}$

### Separating floor

#### Airborne

51dB  $D_{nT,w} + C_{tr}$

#### Impact

53dB  $L_{nT,w}$

## Acoustic Performance

Values quoted are typical and based on the treatment being installed correctly and pre-completion tested (PCT).  
Airborne performance tested in accordance with BS EN ISO 140-4:1998  
Impact performance tested in accordance with BS EN ISO 140-7:1998

## Third Party Approvals and Certification



ISO 9001: 2004

## Environmental Credentials

