

Separating floor - Timber (refurb and conversion)

CELLECTA ScreedBoard acoustic treatment laid on timber sub-floor
Existing timber decking and floor joists
Ceiling retained or replaced

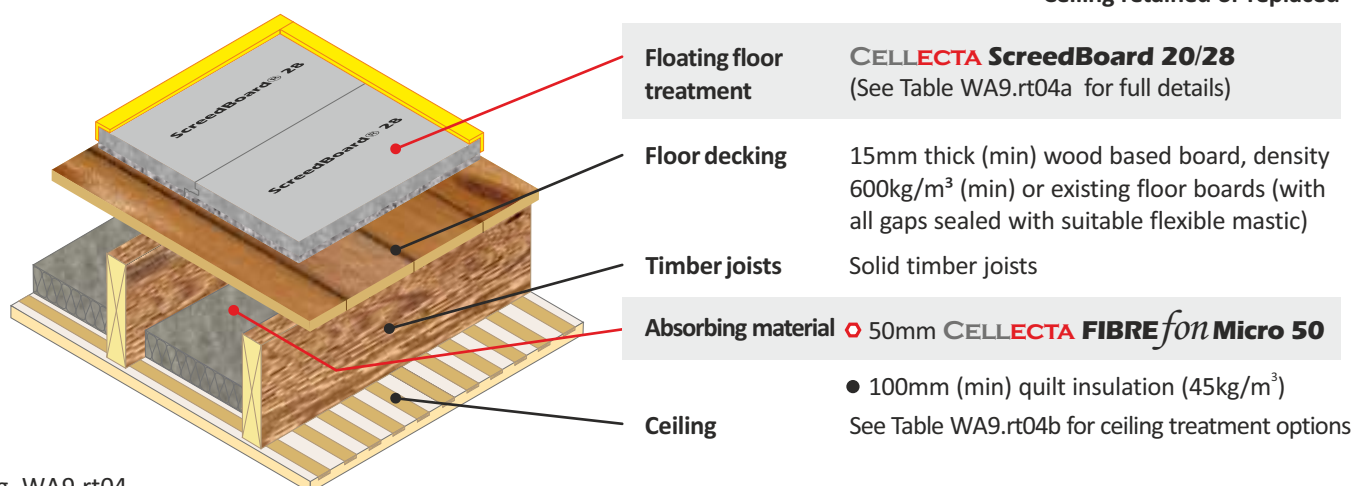


Fig. WA9.rt04

FASTRACKCAD
ARCHITECTURAL CAD DATABASES

n55Plus

Table WA9.rt04a

Installation Options

Resilient overlay platform floor system

ScreedBoard 28 Ultra high performance, dense acoustic composite overlay board
Dimensions: 28mm x 600mm x 1200mm
Weight: 26.00kg/m² / 18.72kg/board

YELOfon FS50
Profiled perimeter flanking strip
Dimensions: 6mm x 50mm x 30mm x 2m

Airborne 45dB $R_w + C_{tr}$ **Impact** 62dB $L_{n,w}$

Resilient overlay platform floor system

ScreedBoard 28 Ultra high performance, dense acoustic composite overlay board
Dimensions: 28mm x 600mm x 1200mm
Weight: 26.00kg/m² / 18.72kg/board

YELOfon FS50
Profiled perimeter flanking strip
Dimensions: 6mm x 50mm x 30mm x 2m

Airborne 52dB $R_w + C_{tr}$ **Impact** 54dB $L_{n,w}$

Table WA9.rt04b

Ceiling Treatment Options

Ceiling treatment
Plaster and lath ceiling with minimum mass of 16kg/m², fixed directly to floor joists.

Ceiling boards must not penetrate or touch joists

- 16mm (min) metal resilient bars mounted at right angles to the joists at 400mm (max) centres.
- 30mm **CELLECTA HP30** resilient bars mounted at right angles to the joists at 600mm (max) centres, as shown.

Ceiling treatment
Two layers of gypsum-based board, composed of 15mm (nominal 12.5kg/m²) fixed with 25mm screws and a second layer of 15mm (nominal 12.5kg/m²) fixed with 42mm screws, with all joints staggered.

HP30 - 30mm void
48kg/m² max ceiling load @ 600mm centres

Acoustic Performance

Performance values quoted were achieved at Sound Research laboratories, Sudbury in accordance with Approved Document E: Annex B: Procedures for sound insulation testing.
Airborne results tested in accordance with BS EN ISO 140-3:1995
Impact results tested in accordance with BS EN ISO 140-6: 1998

Third Party Accreditation and Approvals



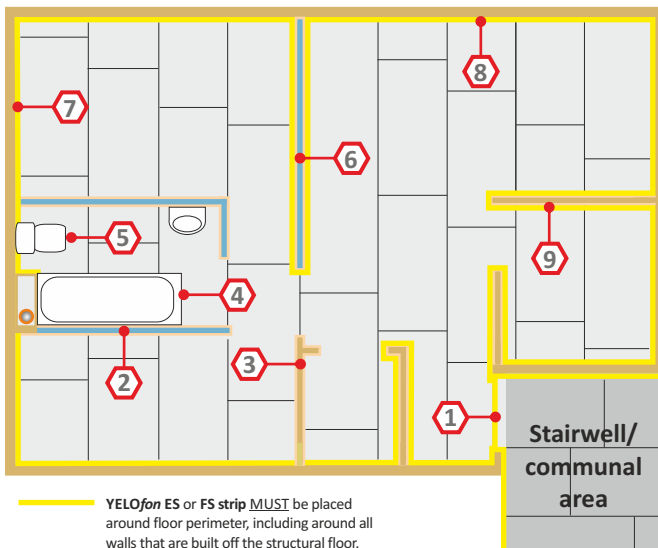
ISO 9001: 2004

Environmental Credentials



Design & installation details - CELLECTA ScreedBoard

The acoustic performance of the floor structure will be compromised if the **ScreedBoard's** are not completely isolated from the sub-floor, soil pipes, door frames, surrounding walls and their treatments. To address this risk, each potential problem area needs to be detailed accordingly.

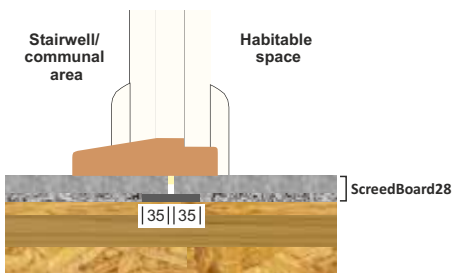


Fixing tools required

- A. Hand or skill saw
- B. Club hammer
- C. ScreedBoard "Fixing batten"
- D. ScreedBoard "Pull bar"
- Packing shims (not shown)

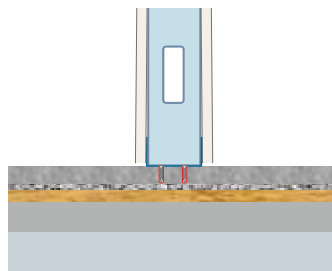
Installation video on the **CELLECTA** app

1 Door threshold



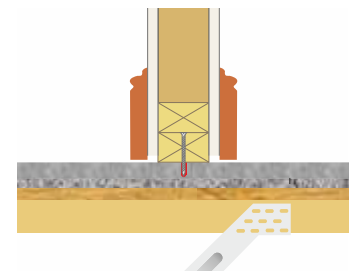
To add additional support, trim off 35mm of the resilient later from the leading edges and install a 75mm wide **RUBBERfon Threshold Support Strip (TTS)**.

2 Metal frame partition built off the floor treatment



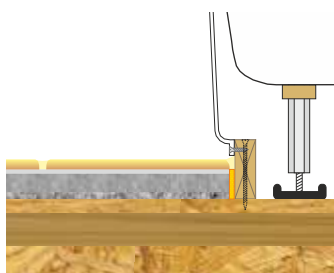
Non-load bearing metal frame walls can be built directly off the **ScreedBoard 20/28**. Care should be taken to ensure screws **DO NOT** penetrate the resilient layer.

3 Timber stud partition built off the floor treatment



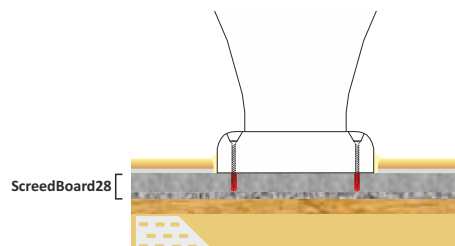
Non-load bearing timber stud walls can be built directly off the **ScreedBoard 20/28**. Care should be taken to ensure screws **DO NOT** penetrate the resilient layer.

4 Baths, shower trays and sanitary ware built off the structural floor



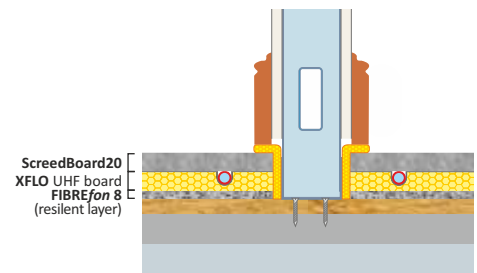
Baths, shower trays and sanitary ware built off the structural floor should be isolated from the **ScreedBoard 28** and any floor finished.

5 Baths, shower trays and sanitary ware built off the floor treatment.



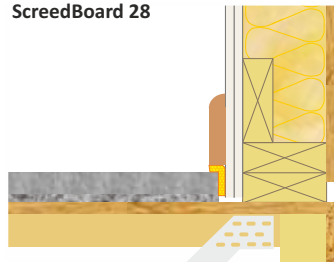
Baths, shower trays and sanitary ware can be built directly off the **ScreedBoard 28**. Ensure the screws do not penetrate the resilient layer.

6 Metal frame partition built off the structural floor



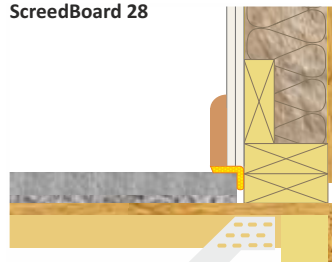
Lightweight partition walls built off the structural floor **MUST** be isolated from the **ScreedBoard** with **YELOfon FS50** or **ES5/100** flanking strip.

7 Wall treatment installed before the ScreedBoard 28



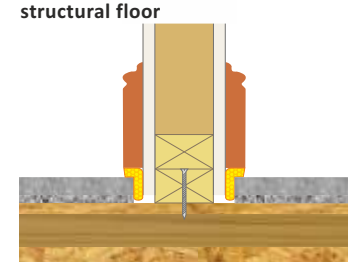
Wall treatments **MUST** be isolated from the **ScreedBoard 28** with **YELOfon FS50** strip.

8 Wall treatment installed after the ScreedBoard 28



Wall treatments **MUST** be isolated from the **ScreedBoard 28** with **YELOfon FS50** strip.

9 Timber stud partition built off the structural floor



Lightweight internal walls built off the structural floor **MUST** be isolated from the **ScreedBoard** with **YELOfon FS** strip.