

# ScreedBoard<sup>®</sup>

High Density Interlocking Floorboard

- ◊ Robust Detail Acoustic Treatment
- ◊ Ideal Overlay for UFH Systems
- ◊ High Thermal Conductivity
- ◊ Accepts All Types of Floor Finish
- ◊ 100% Recycled Gypsum



# Why **CELLECTA**?

**CELLECTA** is the UK's leading innovator, manufacturer and supplier of environmentally friendly, high performance thermal and acoustic insulation products and systems.

For over 25 years our products have been successfully installed in a myriad of residential, commercial, educational, health and industrial buildings.

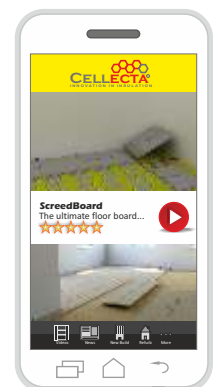
**CELLECTA**'s team of experienced staff are able to offer unrivalled customer support, from delivering RIBA certified CPDs, assisting in selecting the most suitable product that satisfies current legislation, arranging delivery of the right materials direct to site on time, to providing after sales installation instructions to ensure customer satisfaction.



## **FREE** services offered by **CELLECTA**:

- ◊ Technical and installation advice
- ◊ Architectural drawings and NBS specs
- ◊ U-value and imposed load calculations
- ◊ Site surveys and take-off service
- ◊ Arrange acoustic testing
- ◊ Present RIBA certified CPDs

For on the go access to information, including installation videos & technical data, download the **CELLECTA** app for smart phones and tablet devices.



**01634 29-66-77**



**01634 22-66-30**



**technical@collecta.co.uk**



**collecta.co.uk**



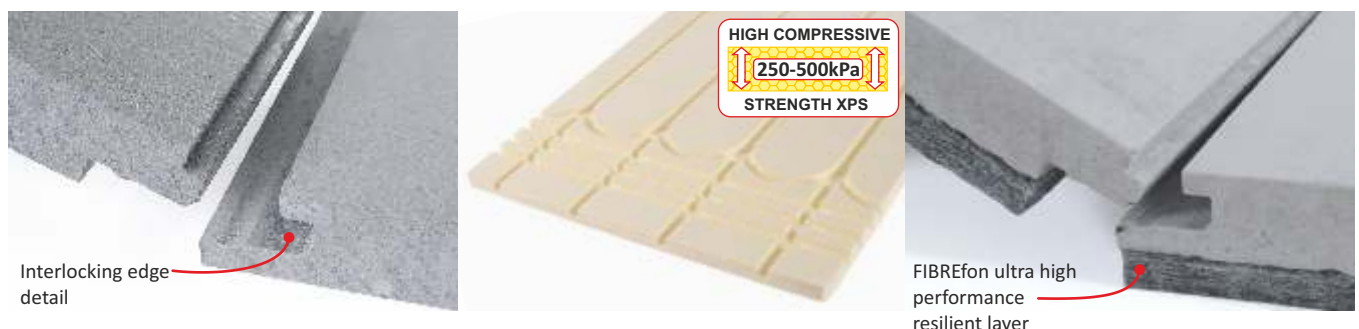
# ScreedBoard®

**ScreedBoard** is an award winning, high density, 100% recycled, non-combustable, reinforced, calcium sulphate floor board available in two variants. **ScreedBoard 20** with its high thermal conductivity is ideal for underfloor heating applications, and **ScreedBoard 28** with its **FIBREfon 8** resilient layer provides unrivalled sound proofing performance.

- 3 x more thermally conductive than chipboard
- Outstanding acoustic performance - **Robust Detail** treatment
- Suitable for all types of timber, concrete and steel floors
- Non-combustable EN 13501-1 Class A1<sup>(1)</sup>
- Unique interlocking edge detail - no screws required
- Smooth seamless joint
- Quick and easy to install
- Cut to size with a hand or skill saw
- Low thermal expansion
- Accepts all floor finishes: vinyl, tiles, timber & carpet



<sup>(1)</sup> ScreedBoard 20. <sup>(2)</sup> ScreedBoard 28.



**ScreedBoard® 20**  
High conductivity overlay board

**XFLOR®**  
High compressive strength UFH boards

**ScreedBoard® 28**  
High density acoustic composite overlay board



**FASTRACKCAD**  
ARCHITECTURAL CAD DATABASES

Available on  
**bimstore.co**

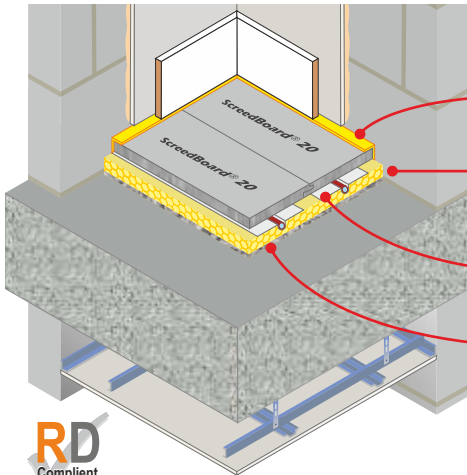
**NSPlus**



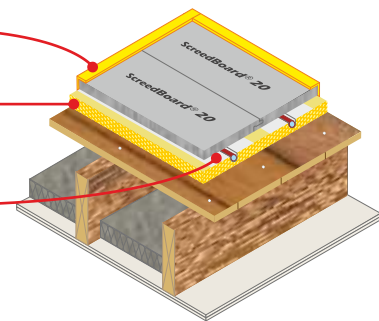
## ScreedBoard® 20

ScreedBoard 20 is the ideal overlay board for both ground and upper floors incorporating an underfloor heating system due to its high thermal conductivity and rapid heat transfer characteristics.

Concrete separating and intermediate floors incorporating underfloor heating



Timber intermediate floors incorporating underfloor heating



**YELOfon ES5/120**  
Perimeter edge strip

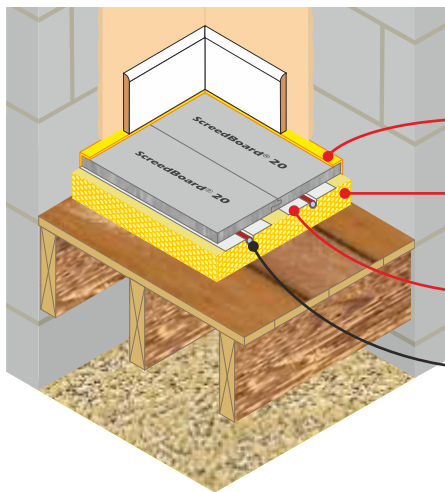
**XFLOR**  
High compressive strength  
UFH insulation board

**ULTRApate 0.5**  
Aluminium heat diffuser plate

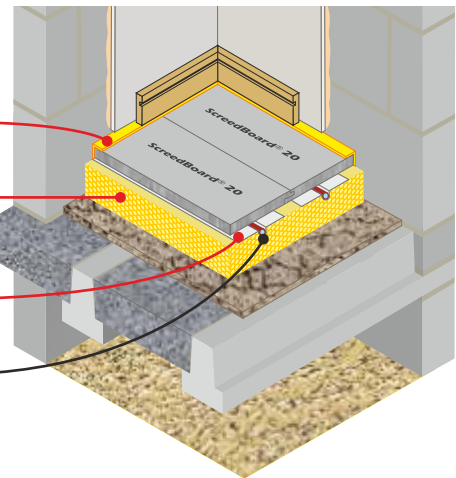
**FIBREfon 8**  
High performance acoustic layer



Timber joist ground floors incorporating underfloor heating



Concrete ground floors incorporating underfloor heating



**YELOfon ES5/120**  
Perimeter edge strip

**XFLOR**  
High compressive strength  
UFH insulation board

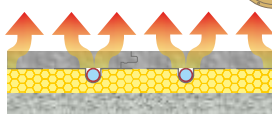
**ULTRApate 0.5**  
Aluminium heat diffuser plate

UFH pipe (by others)

### Superior Thermal Conductivity

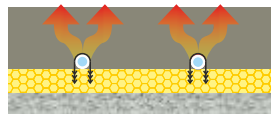
ScreedBoard 20 has the lowest thermal resistance when compared to the most commonly used floor finishes, allowing boilers, ground water heat pumps and heat recovery systems to work at maximum efficiency.

**ScreedBoard 20**  
m<sup>2</sup>K/W 0.05



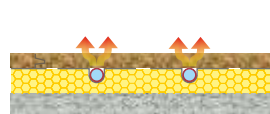
- ⊕ Outstanding heat transfer characteristics
- ⊕ Quick reaction times
- ⊕ No drying out time
- ⊕ Low imposed load on structure
- ⊕ Compatible with all floor finishes
- ⊕ Does not swell or expand

**75mm Sand/cement screed**  
m<sup>2</sup>K/W 0.065



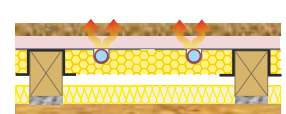
- ⊕ Good heat transfer characteristics
- ⊕ Compatible with most floor finishes
- ⊖ Slow reaction times
- ⊖ Up to 75 days drying time
- ⊖ Heavy imposed load on structure

**18mm Chipboard**  
m<sup>2</sup>K/W 0.138



- ⊕ No drying out time
- ⊕ Low imposed load on structure
- ⊖ Poor heat transfer characteristics
- ⊖ Slow reaction times
- ⊖ Limited floor finish compatibility
- ⊖ Swells and expands when wet

**Acoustic batten system**  
m<sup>2</sup>K/W 0.237

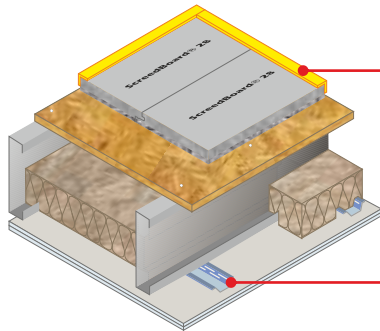


- ⊕ No drying out time
- ⊕ Low imposed load on structure
- ⊖ Very poor heat transfer characteristics
- ⊖ Very slow reaction times
- ⊖ Limited floor finish compatibility
- ⊖ Swells and expands when wet

## ScreedBoard® 28

ScreedBoard 28 is the ultimate composite acoustic overlay treatment, its high density and unique resilient layer provides unrivalled acoustic performance. **ScreedBoard 28** is the only acoustic treatment to carry **Robust Detail** status: **E-FS-3**, **E-FT-5** & **E-FT-6** and is **RD FFT4** compliant for **E-FC-1** & **E-FC-2**.

**Steel joist separating floors**  
Robust Detail **E-FS-3**



**YELOfon FS50**  
Profiled acoustic flanking strip

**CELLECTA HP30**  
High performance resilient bar



**Airborne**  
54dB  $D_{nT,w} + C_{tr}$

**Impact**  
55dB  $L_{nT,w}$

**Building Regs**  
+5dB

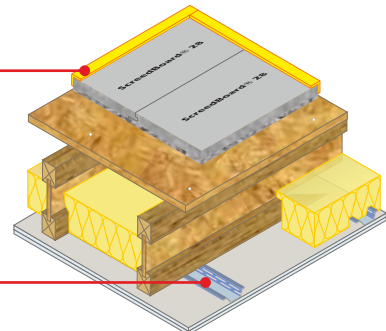


**Airborne**  
51dB  $D_{nT,w} + C_{tr}$

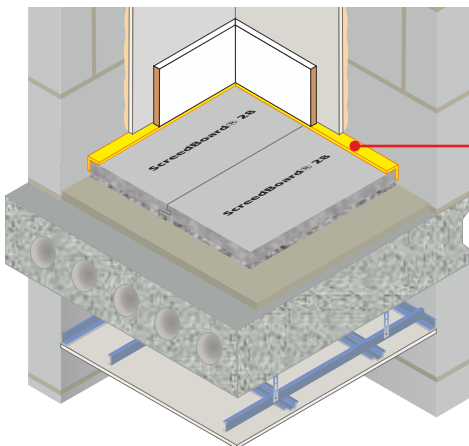
**Impact**  
55dB  $L_{nT,w}$

**Building Regs**  
+5dB

**Timber separating floors**  
Robust Details **E-FT-5** & **E-FT-6**



**Concrete separating floors**  
Robust Detail FFT 4: **E-FC-1** & **E-FC-2**



**YELOfon FS50**  
Profiled acoustic flanking strip

**CELLECTA Micro 50**  
Non-itch sound absorbing quilt

**CELLECTA HP30**  
High performance resilient bar



**Airborne**  
52dB  $D_{nT,w} + C_{tr}$

**Impact**  
46dB  $L_{nT,w}$

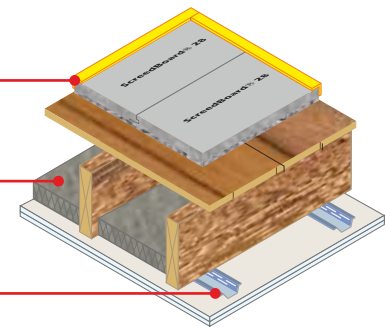
**Building Regs**  
+5dB



**Airborne**  
52dB  $D_{nT,w} + C_{tr}$

**Impact**  
54dB  $L_{nT,w}$

**PCT solution for timber intermediate refurbishment/conversion floors**



### Outstanding Performance and Reduces Number of Brick Courses

**ScreedBoard 28** composite acoustic overlay (FFT4, E-FS-3, E-FT-5 & E-FT-6) weighs 26kg/m<sup>2</sup>, the same as a combination of 19mm plasterboard plank and 18mm chipboard required for the Robust Detail FFT1 - deep acoustic batten system, yet provides similar acoustic performance. However, the board is only 28mm thick compared to ≥107mm, reducing the number of brick courses required, saving money and opening up design possibilities.



01634 29-66-77



collecta.co.uk



technical@collecta.co.uk



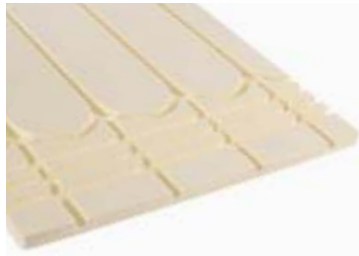
## Underfloor Heating Components

**ScreedBoard 20**   
Highly Conductive Interlocking Floorboard



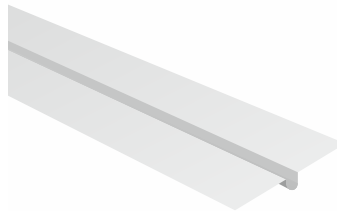
- Ideal for underfloor heating applications
- Unrivalled acoustic performance: RD E-FS-3, E-FT-5, E-FT-6 & FFT4 compliant
- Unique interlocking edge detail
- Made from 100% recycled materials
- 20mm x 600mm x 1200mm

**XFLO<sup>®</sup>**   
High Strength Underfloor Heating Board



- Available in three compressive strengths: 250, 300 & 500\*kPa
- Manufactured to suit pipe diameter: 10, 12, 14, 15, 16, 18, 20mm and 150, 200 & 300 mm centres
- Robust Detail compliant component
- 15, 18, 20, 25, 30, 40, 50, 60, 75mm thick x 600mm x 1250\*/2500mm

**ULTRAplate 0.5**   
Aluminium Heat Diffuser Plate



- Highly conductive
- Increases the efficiency of an UFH system
- Manufactured to suit pipe diameter: 10, 12, 14, 15, 16, 18, 20mm
- Simply pushes into XFLO board
- Robust Detail compliant component
- 0.5mm x 135mm x 1000mm

**FIBREfon 8**   
High Performance Resilient Layer



- Outstanding sound reduction properties
- Robust detail resilient layer for: E-FS-1, E-FS-3, E-FC-1, E-FC-2, E-FT-5, & E-FT-6
- Made from recycled polyester
- Easy to cut to size and install
- 8mm x 600mm x 1200mm

## Acoustic Components

**ScreedBoard 28**   
High Density Composite Acoustic Floorboard



- Unrivalled performance - Robust Detail proprietary treatment: FFT4, E-FS-3, E-FT-5 & E-FT-6
- Compatible with steel, concrete & timber floors
- Unique interlocking edge detail
- Looks and feels like screed
- Directly accepts all types of floor coverings
- 28mm x 600mm x 1200mm

**CELLECTA HP30**   
High Performance Ceiling Resilient Bars



- Superior acoustic properties and hanging capabilities over standard 16mm bars
- Robust Detail proprietary component for: E-FS-3, E-FT-5 & E-FT-6
- Reduces risk of screws causing acoustic bridging
- Only needs to be installed at 600mm centres
- 30mm x 3000mm

**FIBREfon Micro 50**   
Non-itch Sound Absorbing Quilt



- Outstanding sound absorbency
- Only 50mm thick
- Performs the same as 100mm mineral wool
- Suitable for ceiling and partition voids
- Robust Detail proprietary component
- 50mm x 3/400mm x 7.2m

**YELOfon ES5** Perimeter edge strip



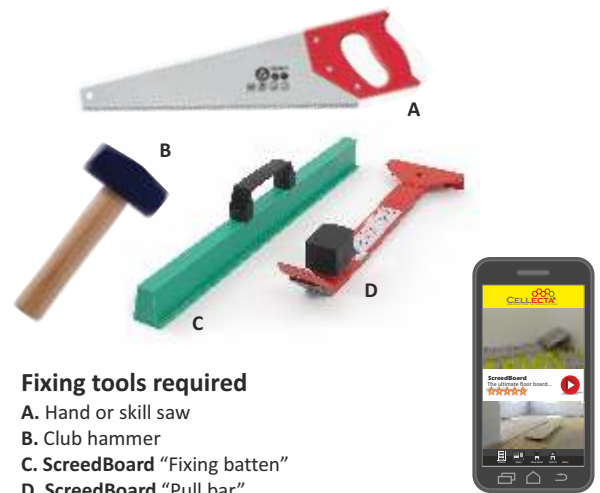
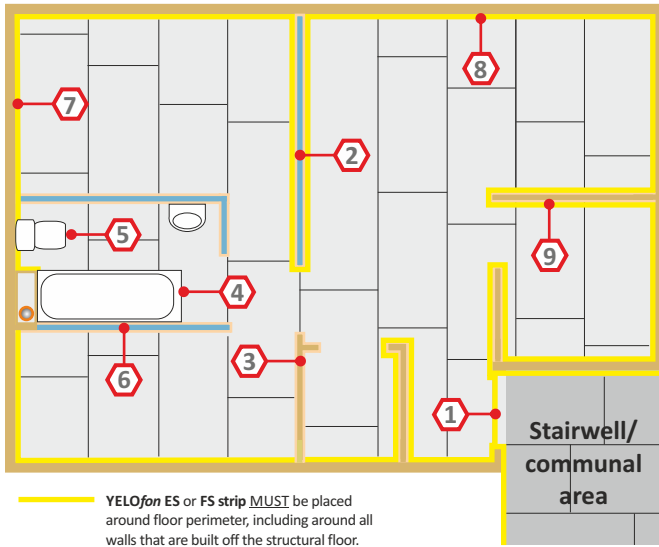
- ESS/15: 5mm x 15mm (h) x 50m
- ESS/60: 5mm x 60mm (h) x 50m
- ESS/100: 5mm x 100mm (h) x 50m
- ESS/120: 5mm x 120mm (h) x 50m
- ESS/150: 5mm x 150mm (h) x 50m

**YELOfon FS** "L" profiled perimeter flanking strips

- FS15: 6mm x 15mm x 30mm x 2m
- FS30: 6mm x 30mm x 30mm x 2m
- FS50: 6mm x 50mm x 30mm x 2m

# Design & installation details - CELLECTA ScreedBoard

The acoustic performance of the floor structure will be compromised if the **ScreedBoard's** are not completely isolated from the sub-floor, soil pipes, door frames, surrounding walls and their treatments. To address this risk, each potential problem area needs to be detailed accordingly.

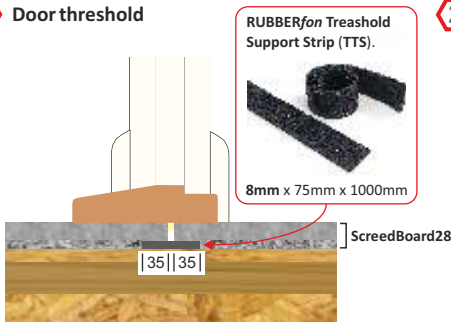


### Fixing tools required

- A. Hand or skill saw
- B. Club hammer
- C. ScreedBoard "Fixing batten"
- D. ScreedBoard "Pull bar"
- Packing shims (not shown)

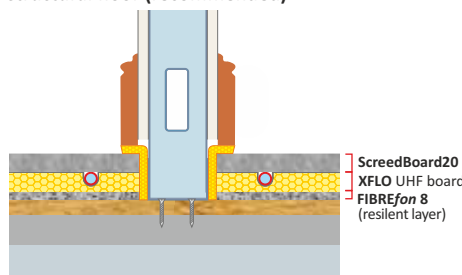
Installation video on the **CELLECTA** app

### 1 Door threshold



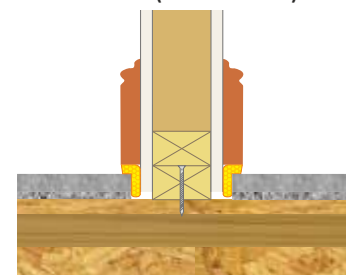
To add additional support, trim off 35mm of the resilient later from the leading edges and install a 75mm wide **RUBBERfon Treashold Support Strip (TTS)**.

### 2 Metal frame partition built off the structural floor (recommended)



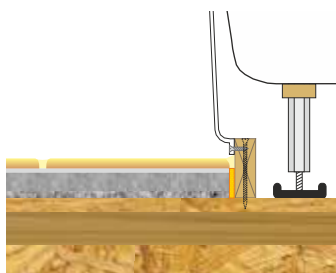
Lightweight partition walls built off the structural floor **MUST** be isolated from the **ScreedBoard** with **YELOfon FS** or **ES5** flanking strip.

### 3 Timber stud partition built off the structural floor (recommended)



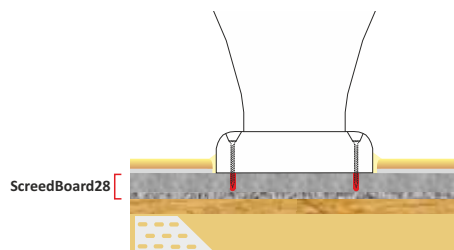
Lightweight internal walls built off the structural floor **MUST** be isolated from the **ScreedBoard** with **YELOfon FS** strip.

### 4 Baths, shower trays and sanitary ware built off the structural floor



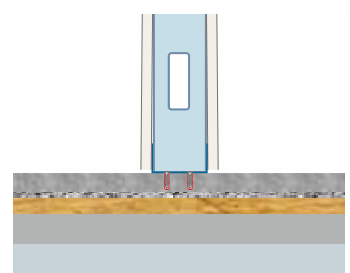
Baths, shower trays and sanitary ware built off the structural floor should be isolated from the **ScreedBoard 28** and any floor finished.

### 5 Baths, shower trays and sanitary ware built off the floor treatment.



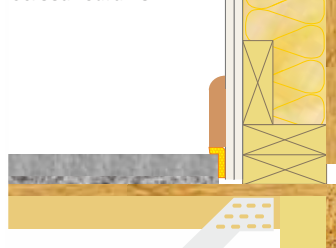
Baths, shower trays and sanitary ware can be built directly off the **ScreedBoard 28**. Ensure the screws **DO NOT** penetrate the resilient layer.

### 6 Metal frame partition built off the structural floor



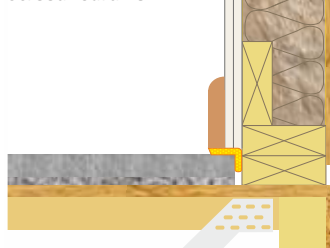
Non-load bearing metal frame walls can be built directly off the **ScreedBoard 20/28**. Care should be taken to ensure screws **DO NOT** penetrate the resilient layer.

### 7 Wall treatment installed before the ScreedBoard 28



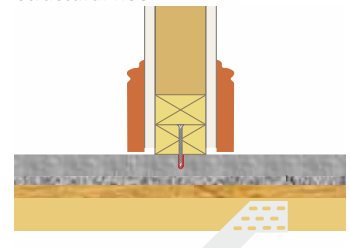
Wall treatments **MUST** be isolated from the **ScreedBoard 28** with **YELOfon FS** strip.

### 8 Wall treatment installed after the ScreedBoard 28



Wall treatments **MUST** be isolated from the **ScreedBoard 28** with **YELOfon FS** strip.

### 9 Timber stud partition built off the structural floor



Non-load bearing timber stud walls can be built directly off the **ScreedBoard 20/28**. Care should be taken to ensure screws **DO NOT** penetrate the resilient layer.



**Project:** Provider Mill, Gloucester  
**Type of Construction:** Steel/concrete composite floor  
**Size:** 2,500m<sup>2</sup>  
**Products Installed:** ScreedBoard 28 composite acoustic overlay board



**Project:** New apartments, Eastbourne  
**Type of Construction:** Timber frame  
**Size:** 1,250m<sup>2</sup>  
**Products Installed:** ScreedBoard 28 composite acoustic overlay board



**Project:** Horsham Gate, Horsham, West Sussex  
**Type of Construction:** Timber frame  
**Size:** 2,500m<sup>2</sup>  
**Products Installed:** ScreedBoard 28 composite acoustic overlay board



**Project:** St Michaels Catholic School, Aylesbury  
**Type of Construction:** In-situ concrete frame  
**Size:** 4,500m<sup>2</sup>  
**Products Installed:** ScreedBoard 20 conductive overlay board & XFLO underfloor heating board

## Base Floor Compatibility

	ScreedBoard 20 + XFLO	ScreedBoard 20 + XFLO + FIBREfon 8	ScreedBoard 28
Concrete ground floors	✓		
Timber ground floors	✓		
Concrete intermediate / separating floors	✓ <sup>(A)</sup>	✓	✓
Timber intermediate / separating floors	✓ <sup>(A)</sup>	✓	✓
Steel intermediate / separating floors	✓ <sup>(A)</sup>	✓	✓

(A) Layer of FIBREfon 8 required for separating floors that require acoustic testing

## Floor Covering Compatibility

	ScreedBoard 20 + XFLO	ScreedBoard 20 + XFLO + FIBREfon 8	ScreedBoard 28
Floor tiles (ceramic, marble, porcelain, stone slate, etc.)	✓*	✓*	✓*
Wood (engineered, laminated and solid)	✓*	✓*	✓*
Vinyl roll, luxury vinyl (LVT inc. Amtico, Karndean, Polyfloor etc.)	✓**	✓**	✓**
Carpet / carpet tiles	✓	✓	✓

\*Prime ScreedBoard with SB Primer before laying any bonded surface in accordance with CELLECTA's and the manufacturers recommendations.

\*\*Laid in accordance with the manufacturers recommendations

## Physical Properties

	ScreedBoard 20 (overlay board)	XFLO (UFH board)	FIBREfon 8 (acoustic sheet)	ScreedBoard 28 (acoustic composite)
Thickness'	20mm	25, 30, 40, 50, 60, 75mm	8mm	28mm (20mm + 8mm resilient layer)
Board size	600mm x 1200mm	600 x 1250* x 2500mm	600mm x 1200mm	600mm x 1200mm
Weight per board	18.00kg	1.28 - 3.83kg	0.72kg	18.72kg
Weight per m <sup>2</sup>	25.00kg	0.85 - 2.55kg	1.00kg	26.00kg
Quantity per pallet	60 boards /43.2m <sup>2</sup>	As required	-	60 boards /43.2m <sup>2</sup>
Thermal conductivity	0.40W/mK	0.033W/mK	-	-
Thermal resistance	0.05m <sup>2</sup> K/W	-	-	-
Compressive strengths	-	250, 300, 500*kPa	-	-
Thermal expansion rate	0.015 mm/m	-	-	0.015 mm/m
Fire classification EN 13501-1	Class A1	Class E	Class E	Class Bfl,S1



## Third Party Accreditation, Testing and Approvals




## Environmental Credentials






CELLECTA's extensive range of high performance thermal and acoustic insulation products are supported by a technical advice line staffed by experienced consultants who can provide a number of useful services:

- ◊ U-value, condensation risk or imposed load calculations
- ◊ Give advice on the most suitable product to use
- ◊ Supply detailed fixing instructions
- ◊ Arrange site surveys
- ◊ Technical specifications

 **01634 29-66-77**

 **01634 22-66-30**

 **technical@collecta.co.uk**

 **collecta.co.uk**

Other products available from CELLECTA

**HEXATHERM**<sup>®</sup>  
High Compressive Strength Thermal Insulation

**TETRIS**<sup>®</sup>  
Thermal Block Flooring System

**UNICLOSER**   
Insulated Cavity Closer Solutions

**YELOfon**<sup>®</sup>  
Closed Cell Acoustic Products

**FIBREfon**<sup>®</sup>  
Fibrous Based Acoustic Products

**DECKfon**<sup>®</sup>  
Open Cell Acoustic Treatments

**RUBBERfon**<sup>®</sup>  
High Compressive Strength Acoustic Products

**HIGYP**<sup>®</sup>  
High Density Wall Boards

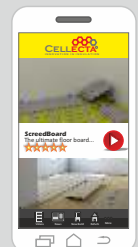
**HIDECK**<sup>®</sup>  
High Density Floor Boards



**FASTRACKCAD**  
ARCHITECTURAL CAD DATABASES

 Available on  
**bimstore.co**

**NSPlus**



CELLECTA  
App