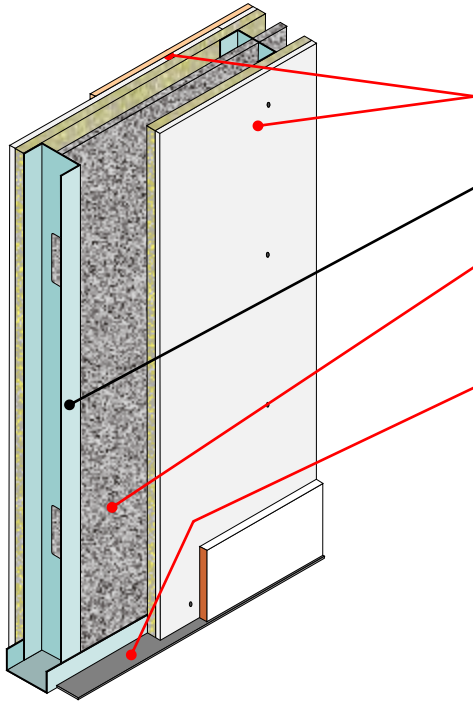


# Metal frame wall

# PCT / up-grade solution

Composite wall lining  
 Suitable for new and existing metal frame walls  
 Acoustic treatment fixed directly to metal frame



- Wall treatment** FIBRE *fon* HiGYP 32  
(See *Table SW* for treatment options)
- Metal frame wall** 70mm (min) metal frame wall, C-studs set at 600mm (max) centres
- Absorbing material**
  - 15mm FIBRE *fon* MICRO SLAB 15
  - 25mm (min) Mineral wool acoustic partition roll
- Perimeter flanking strip** *Collecta* J-strip self-adhesive acoustic foam strip

Table SW

PCT wall lining options					
	Metal frame wall	SW. T1	SW. T2	SW. T3	SW. T4
<b>Typical PCT performance</b>	70mm metal frame C-studs at 600mm centres, 25mm mineral wool (APR) or FIBREfon Micro Slab 15 fitted in between C-studs, 12.5mm plaster boards (8kg/m <sup>2</sup> ) on both sides.	FIBREfon HiGYP 28 fixed to one side of the metal frame. FIBREfon Micro Slab 15 or 25mm mineral wool (APR) fitted in between C-studs, 12.5mm plasterboard (8kg/m <sup>2</sup> ) fixed to second side.	FIBREfon HiGYP 28 fixed to both sides of the metal frame. FIBREfon Micro Slab 15 or 25mm mineral wool (APR) fitted in between C-studs.	FIBREfon HiGYP 28 fixed to resilient bars set at 600mm (max) centres fixed to one side of the metal frame. FIBREfon Micro Slab 15 or 25mm mineral wool (APR) fitted in between C-studs. Two layers of 12.5mm plasterboard (8kg/m <sup>2</sup> ) fixed to second side.	FIBREfon HiGYP 28 fixed to both sides of the metal frame. FIBREfon Micro Slab 15 or 25mm mineral wool (APR) fitted in between C-studs. Additional layer of 12.5mm gypsum-based board (8kg/m <sup>2</sup> ) fixed to second face.
R <sub>w</sub>	43dB	48dB	53dB	55dB	55dB
R <sub>w</sub> + Ctr	34dB	45dB	44dB	46dB	46dB
Improvement on basic timber stud partition ΔR <sub>w</sub>	-	5dB	10dB	12dB	12dB
Wall detail					
<b>Perimeter resilient flanking strip required</b>	Yes	No	No	Yes	No
<b>Collecta J-strip</b> Self-adhesive polyethylene foam flanking strip: 2.5mm (t) x 37mm (w) x 40m (l). Used to isolate wall lining from adjoining walls, ceiling and floor.					
<b>Fire resistance</b>	<b>30 minutes</b>	<b>30 minutes</b>	<b>60 minutes</b>	<b>60 minutes</b>	<b>60 minutes</b>