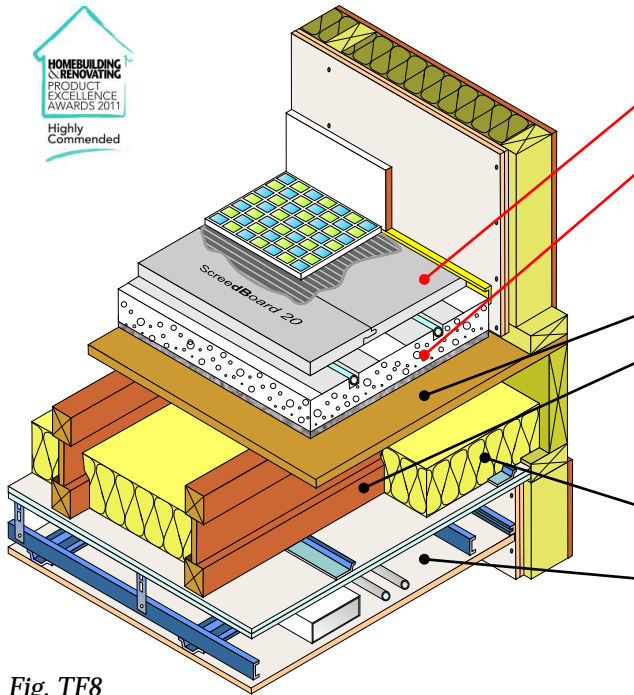


Collecta ScreedBoard 20 laid on underfloor heating system
 Timber I-joists, solid timber, metal web or timber web joists
 Use with timber frame walls only



Floor finish	<i>Collecta</i> ScreedBoard 20 (See <i>Table TF8</i> for full details)
Acoustic and thermal treatment	12mm (min) routed extruded or routed/moulded expanded polystyrene insulation bonded to FIBREfon 8 resilient layer
Floor decking	15mm thick (min) OSB
Joists	<ul style="list-style-type: none"> • 220mm (min) solid timber joist • 240mm (min) timber I-joists • 253mm (min) metal web joists • 254mm (min) timber web joists
Absorbing material	100mm (min) quilt insulation (10-36g/m ³) between joists
Ceiling	See <i>Table TF8</i> for ceiling treatment

Fig. TF8



FASTRACKCAD[®]
 ARCHITECTURAL CAD DATABASES

Table TF8

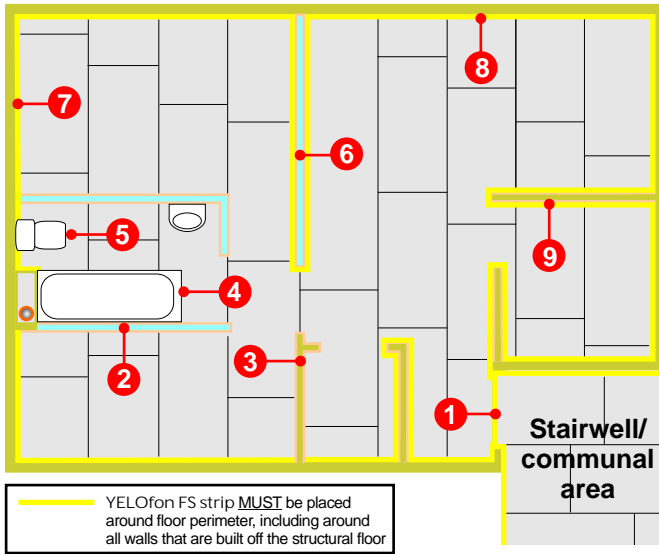
PCT floating floor treatment	Perimeter resilient flanking strip required	Ceiling treatment options						
<p>ScreedBoard[®] 20 High density low resistance floor board</p> <p>Option 1: Underfloor heating thermal board X2i / X2i^e High performance extruded polystyrene boards</p> <p>Option 2: Routed or moulded expanded polystyrene (EPS) panel</p> <p>FIBREfon[®] 8 Recycled resilient layer</p> <p>Additional layers required to complete treatment</p> <ul style="list-style-type: none"> • Mineral wool quilt laid between joists - 100mm (min) 10-33kg/m³ <p>Product information ScreedBoard 20 Board dimensions: 20mm x 600mm x 1200mm Edge profile: Interlocking tongue & groove Weight: 25.00kg/m² / 18.00kg per board Thermal resistance: 0.20m²/K/W FIBREfon 8 acoustic fleece; 8mm <i>Collecta</i> SB joint adhesive: 1L for every 33m² of boards</p> <p>X2i / X2i^e: see page 60 for further information EPS: refer to manufacturers technical data</p> <p>Construction notes Materials must be installed in accordance with manufacturers' instructions to achieve stated acoustic values. Wall treatments MUST be isolated from the floating floor with YELOfon ES5/120 flanking strip. Ensure services do not bridge the resilient layer. Services must not puncture primary ceiling lining (except cables, which should be sealed with flexible sealant).</p>	<p>YELOfon[®] ES5/120 Polyethylene foam flanking strip: 5mm x 120mm x 50m installed around the perimeter of the flooring board to isolate floor from walls and skirting.</p> <p><5 GWP All components*</p>	<p>Ceiling board fixings must not penetrate or touch the floor joists 16mm (min) metal resilient bars mounted at right angles to the joist at 400mm centres.</p> <p>Primary ceiling: CT1-Two layers of gypsum-based board, composed of 19mm (nominal 13.5kg/m²) fixed with 32mm screws and 12.5mm (nominal 10kg/m²) fixed with 42mm screws, with all joists staggered. CT2-Two layers of gypsum-based board, composed of 15mm (nominal 12.5kg/m²) fixed with 25mm screws and a second layer of 15mm (nominal 12.5kg/m²) fixed with 42mm screws, with all joists staggered.</p> <p>Sacrificial ceiling: Metal ceiling system with a 100mm (min) void fixed to underside of primary ceiling. One layer of nominal 8kg/m² gypsum based board.</p>						
<p>Robust Detail mean performance</p> <p>$D_{nT,w} + C_{tr} = 51\text{dB}$ $L_{nT,w} = 55\text{dB}$</p> <p>Typical PCT performance⁽²⁾</p> <p>$D_{nT,w} + C_{tr} = 51\text{dB}$ $L_{nT,w} = 55\text{dB}$</p> <p>Code credits*</p> <table border="1"> <tr> <td>Mat 1</td> <td>Pol 1</td> <td>Hea 2</td> </tr> <tr> <td>2</td> <td>1</td> <td>3</td> </tr> </table>	Mat 1	Pol 1	Hea 2	2	1	3		
Mat 1	Pol 1	Hea 2						
2	1	3						

* Code for Sustainable Homes (CSH) credits quoted are typical. Mat 1 value taken from the BRE Green Guide. Pol 1 credit is only awarded if all the other insulation products used have a GWP of <5. Hea 2 credits are based on the floor being pre-completion tested and the separating wall performing to at least the same acoustic standard. Credits subject to relevant category weighted value. See page 5 for further information.

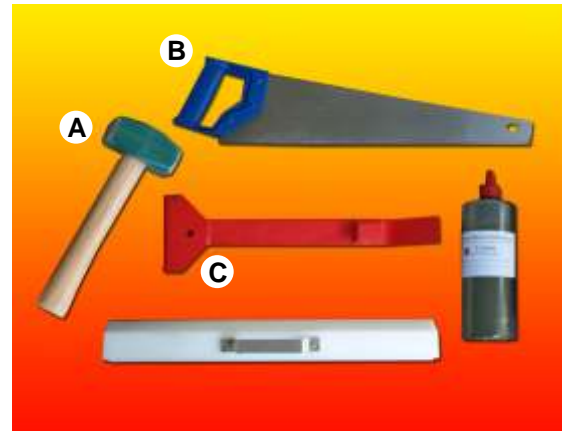
Acoustic values
⁽²⁾ Values quoted are typical, based on the treatment being installed correctly and pre-completion tested.
 Airborne performance tested in accordance with BS EN ISO 140-4:1998
 Impact performance tested in accordance with BS EN ISO 140-7: 1998

Design & installation details - *Collecta* ScreedBoard® 28

The acoustic performance of the floor structure will be compromised if the ScreedBoard 28 is not completely isolated from the timber sub-floor, soil pipes, door frames, surrounding walls and their treatments. To address this risk, each potential problem area needs to be detailed accordingly.

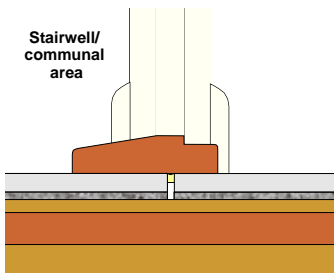


Fixing tools



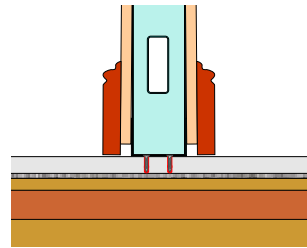
A. Club hammer
B. Hand or skill saw
C. ScreedBoard® "Pull bar"
D. ScreedBoard® "Fixing batten"
E. ScreedBoard® adhesive
Packing shims (not shown)

1 Door threshold



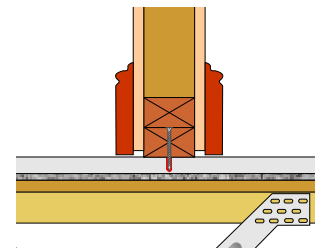
Leave a 5-10mm expansion gap between the habitable area and the communal area ScreedBoards.

2 Metal frame partition built off the floor treatment

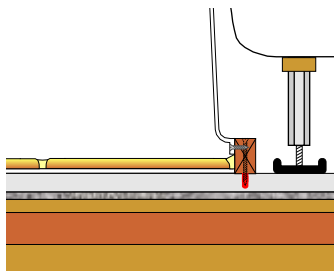


Non-load bearing metal frame or timber stud walls can be built directly off the ScreedBoard 28. Care should be taken to ensure screws DO NOT penetrate the resilient layer.

3 Timber stud partition built off the floor treatment

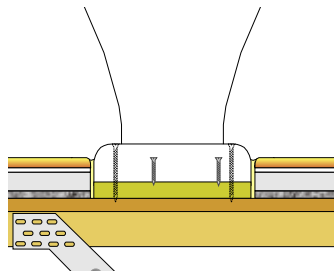


4 Baths, shower trays and sanitary ware built off floor treatment.



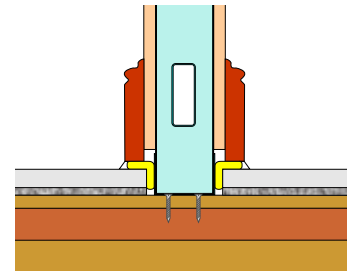
Baths, shower trays and sanitary ware can be built directly off the ScreedBoard 28. Under no circumstance should screws penetrate the resilient layer.

5 Baths, shower trays and sanitary ware built off the structural floor



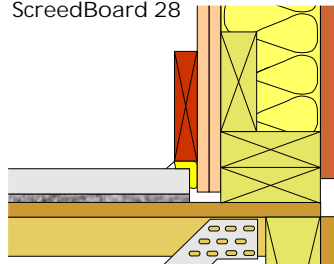
Baths, shower trays and sanitary ware built off the structural floor should be isolated from the ScreedBoard 28 and any floor finish.

6 Metal frame partition built off the structural floor



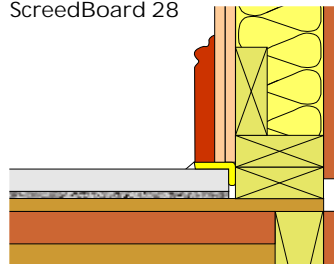
Lightweight partition walls built off the structural floor **MUST** be isolated from the ScreedBoard with YELOfon FS50 strip.

7 Wall treatment installed before the ScreedBoard 28



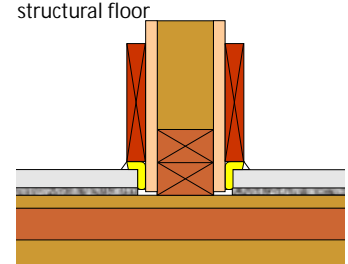
Wall treatments **MUST** be isolated from the ScreedBoard 28 with YELOfon FS50 strip.

8 Wall treatment installed after the ScreedBoard 28



Wall treatments **MUST** be isolated from the ScreedBoard 28 with YELOfon FS50 strip.

9 Timber stud partition built off the structural floor



Lightweight internal walls built off the structural floor **MUST** be isolated from the ScreedBoard with YELOfon FS strip.