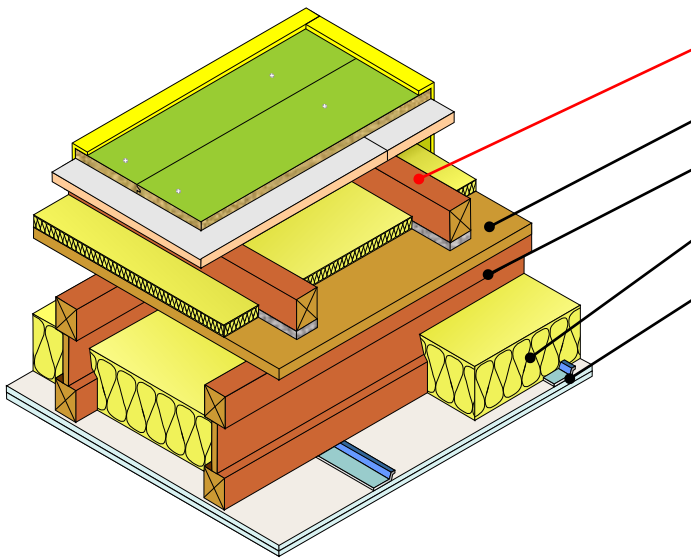


Timber I-joists
Use with timber frame walls only



Floating floor treatment	FFT1 - DECKfon Batten 70 (See Table TF1 for full details)
Floor decking	15mm thick (min)
Joists	240mm (min) timber I-joists
Absorbing material	100mm (min) quilt insulation (10-36g/m ³) between joists
Ceiling	See Table TF1 for ceiling treatment options



FASTRACKCAD
ARCHITECTURAL CAD DATABASES

Fig. TF1

Table TF1

Robust detail E-FT-1 compliant floating floor treatment	Perimeter resilient flanking strip required	Ceiling treatment options
<p>FFT1 - Resilient composite deep batten system</p> <p>DECKfon Batten 70 </p> <p>Additional layers required to complete treatment</p> <ul style="list-style-type: none"> • 18mm (min) tongue & groove flooring board • Gypsum-based board nominal 13.5kg/m² • Mineral wool quilt laid between battens - 13mm (min) 33 - 36kg/m³ - 25mm (min) 10 - 33kg/m³ <p>Dimensions Void dimension indicated is when floor is loaded to 25kg/m² Batten dimensions: 75mm (h) x 45mm (w) x 2400mm (l)</p> <div style="display: flex; justify-content: space-around;"> <div data-bbox="159 1668 454 1792" style="border: 1px solid black; padding: 5px;"> <p>RD performance⁽¹⁾</p> <p>$rd \Delta R_w + C_{tr} = 14\text{dB}$</p> <p>$rd L_w = 16\text{dB}$</p> </div> <div data-bbox="462 1668 582 1792" style="text-align: center;"> <p>VERIFIED BBA DATA</p> </div> <div data-bbox="590 1668 885 1792" style="border: 1px solid black; padding: 5px;"> <p>Typical PCT performance⁽²⁾</p> <p>$D_{nT,w} + C_{tr} = 50\text{dB}$</p> <p>$L_{nT,w} = 54\text{dB}$</p> </div> </div> <p>Construction notes Materials must be installed in accordance with manufacturers' instructions to achieve stated acoustic values. Wall treatments MUST be isolated from the floating floor with YELOfon ES5/120 flanking strip. Ensure services do not bridge the resilient layer. Services must not puncture primary ceiling lining (except cables, which should be sealed with flexible sealant).</p>	<p>YELOfon ES5/120</p> <p>Polyethylene foam flanking strip: 5mm (l) x 120mm (h) x 50m (l) placed around the perimeter of the flooring board to isolate floor from walls and skirting.</p>	<p>Ceiling boards must not penetrate or touch the floor joists 16mm (min) metal resilient bars mounted at right angles to the joist at 400mm centres.</p> <p>CT1-Two layers of gypsum-based board, composed of 19mm (nominal 13.5kg/m²) fixed with 32mm screws and 12.5mm (nominal 10kg/m²) fixed with 42mm screws, with all joists staggered.</p> <p>CT2-Two layers of gypsum-based board, composed of 15mm (nominal 12.5kg/m²) fixed with 25mm screws and a second layer of 15mm (nominal 12.5kg/m²) fixed with 42mm screws, with all joists staggered.</p>

Code credits available

(Contact Collecta for further information)

Acoustic values
⁽¹⁾RD impact performance values quoted were conducted at Sound Research Laboratories, Sudbury, UKAS ref. 0444. Airborne tested in accordance with BS EN ISO 140-3: 1995 and rated in accordance with BS ISO 717-1: 1997. Impact tested in accordance with BS EN ISO 140-6: 1998 and rated in accordance with BS ISO 717-2: 1997 as detailed in Appendix C of the Robust details handbook (minimum values required $rd \Delta R_w + C_{tr} = 13\text{dB}$ and $rd L_w = 15\text{dB}$).
⁽²⁾ Values quoted are typical, based on the treatment being installed correctly and pre-completion tested, with airborne performance tested in accordance with BS EN ISO 140-4:1998 and impact performance tested in accordance with BS EN ISO 140-7: 1998.