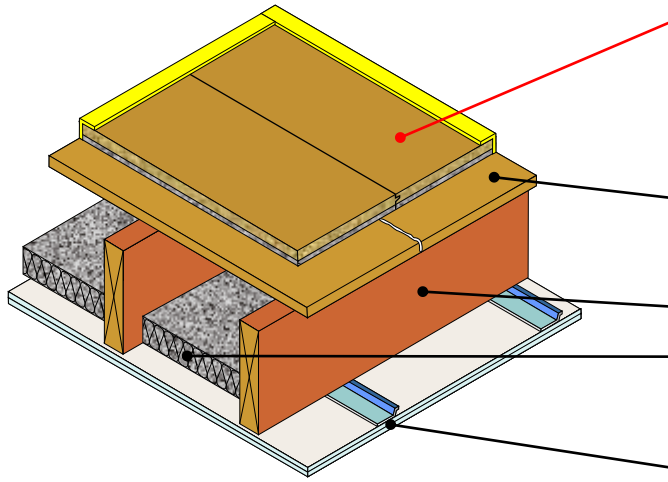


Structural separating floor - Timber (existing)

PCT solution

Existing timber joists
Acoustic treatment laid on sub-floor
Ceiling on resilient bars



Floating floor treatment options	DECKfonMDF 17T DECKfonCHIP 26T DECKfonCHIP 30T (See Table TF16 for full details)
Floor decking	18mm thick (min) chipboard or existing floor boards (with all gaps sealed with suitable flexible mastic)
Joists	Solid timber joists
Absorbing material	<ul style="list-style-type: none"> • 50mm FIBREfon MICRO SLAB 50 • 100mm (min) mineral wool insulation (45kg/m³) between joists
Ceiling	See Table TF16 for ceiling treatment

Fig. TF16 shows DECKfonCHIP26T and FS30 flanking strip
Table TF16



FASTRACKCAD
ARCHITECTURAL CAD DATABASES

PCT floating floor treatment options	Perimeter resilient flanking strip required	Ceiling treatment options
<p>DECKfonMDF 17T GWP</p> <p>Composite acoustic overlay board</p> <p>Typical PCT performance⁽³⁾ $Rw + C_{tr} = 50dB$ $L_{n,w} = 56dB$</p> <p>Product information Board dimensions: 17mm x 600mm x 2400mm Edge profile: Tongue and groove (MR MDF) Weight: 7.45kg/m² / 10.74kg per board</p>	<p>YELOfon ES5/60</p> <p>Polyethylene foam flanking strip: 5mm (t) x 60mm (h) x 50m (l) placed around the perimeter of the flooring board to isolate floor from walls and skirting.</p>	<p>Ceiling boards must not penetrate or touch the floor joists 16mm (min) metal resilient bars mounted at right angles to the joist at 400mm centres.</p> <p>Ceiling treatment Two layers of gypsum-based board, composed of 15mm (nominal 12.5kg/m²) fixed with 25mm screws and a second layer of 15mm (nominal 12.5kg/m²) fixed with 42mm screws, with all joists staggered.</p>
<p>DECKfonCHIP 26T GWP</p> <p>Composite acoustic overlay board</p> <p>Typical PCT performance⁽³⁾ $Rw + C_{tr} = 51dB$ $L_{n,w} = 57dB$</p> <p>Product information Board dimensions: 26mm x 600mm x 2400mm Edge profile: Tongue and groove (P5 chipboard) Weight: 13.40kg/m² / 19.29kg per board</p>	<p>YELOfon FS30</p> <p>Pre-formed polyethylene foam flanking angle: 6mm (t) x 30mm (w) x 30mm (h) x 2m (l) placed around the perimeter of the flooring board to isolate floor from walls and skirting.</p>	<p>Construction note Services must not puncture ceiling linings (except cables, which should be sealed with flexible sealant).</p>
<p>DECKfonCHIP 30T GWP</p> <p>Composite acoustic overlay board</p> <p>Typical PCT performance⁽³⁾ $Rw + C_{tr} = 51dB$ $L_{n,w} = 56dB$</p> <p>Product information Board dimensions: 30mm x 600mm x 2400mm Edge profile: Tongue and groove (P5 chipboard) Weight: 15.80kg/m² / 22.76kg per board</p>	<p>YELOfon FS30</p> <p>Pre-formed polyethylene foam flanking angle: 6mm (t) x 30mm (w) x 30mm (h) x 2m (l) placed around the perimeter of the flooring board to isolate floor from walls and skirting.</p>	

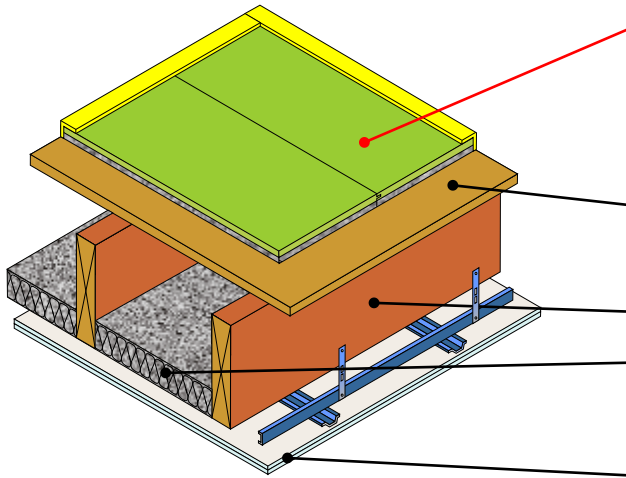
Construction notes
 Materials must be installed in accordance with manufacturers' instructions to achieve stated acoustic values. Wall treatments **MUST** be isolated from the floating floor with YELOfon flanking strip. Ensure services do not come into contact with the floor treatment.
 Once laid, MF17T boards should be covered with the final floor finish as soon as possible to eliminate the risk of mechanical damage to the edge detail.

Acoustic values
⁽³⁾ Test data quoted has been conducted in a UKAS accredited laboratory in accordance with Approved Document E: Annex B: Procedures for sound insulation testing.
 Airborne results tested in accordance with BS EN ISO 140-3:1995
 Impact results tested in accordance with BS EN ISO 140-6: 1998

Structural separating floor - Timber (existing)

PCT solution

Existing timber joists
Acoustic treatment laid on sub-floor
Existing ceiling removed, new metal frame system installed



Floating floor treatment options	DECKfonMDF 17T DECKfonCHIP 26T DECKfonCHIP 30T (See Table TF16b for full details)
Floor decking	18mm thick (min) chipboard or existing floor boards (with all gaps sealed with suitable flexible mastic)
Joists	Solid timber joists
Absorbing material	<ul style="list-style-type: none"> • 50mm FIBREfon MICRO SLAB 50 • 100mm (min) mineral wool insulation (45kg/m³) between joists
Ceiling	See Table TF16b for ceiling treatment

Fig. TF16b shows DECKfon MDF 17T, ES5/60 flanking strip

and FIBREfon MICRO SLAB 50

Table TF16b

PCT floating floor treatment options	Perimeter resilient flanking strip required	Ceiling treatment options
<p>DECKfonMDF 17T Composite acoustic overlay board</p> <p>Typical PCT performance⁽²⁾ $Rw + C_{tr} = 51dB$ $L_{n,w} = 55dB$</p> <p>Product information Board dimensions: 17mm x 600mm x 2400mm Edge profile: Tongue and groove (MR MDF) Weight: 7.45kg/m² / 10.74kg per board</p>	<p>YELOfon ES5/60</p> <p>Polyethylene foam flanking strip: 5mm (t) x 60mm (h) x 50m (l) placed around the perimeter of the flooring board to isolate floor from walls and skirting.</p>	<p>Ceiling treatment Metal ceiling system with a 100mm (min) void, fixed to floor joists. Two layers of 12.5kg/m² gypsum based board.</p>
<p>DECKfonCHIP 26T Composite acoustic overlay board</p> <p>Typical PCT performance⁽²⁾ $Rw + C_{tr} = 52dB$ $L_{n,w} = 56dB$</p> <p>Product information Board dimensions: 26mm x 600mm x 2400mm Edge profile: Tongue and groove (P5 chipboard) Weight: 13.40kg/m² / 19.29kg per board</p>	<p>YELOfon FS30</p> <p>Pre-formed polyethylene foam flanking angle: 6mm (t) x 30mm (w) x 30mm (h) x 2m (l) placed around the perimeter of the flooring board to isolate floor from walls and skirting.</p>	<p>Construction note Services must not puncture ceiling linings (except cables, which should be sealed with flexible sealant).</p>
<p>DECKfonCHIP 30T Composite acoustic overlay board</p> <p>Typical PCT performance⁽²⁾ $Rw + C_{tr} = 52dB$ $L_{n,w} = 55dB$</p> <p>Product information Board dimensions: 30mm x 600mm x 2400mm Edge profile: Tongue and groove (P5 chipboard) Weight: 16.20kg/m² / 23.32kg per board</p>	<p>YELOfon FS30</p> <p>Pre-formed polyethylene foam flanking angle: 6mm (t) x 30mm (w) x 30mm (h) x 2m (l) placed around the perimeter of the flooring board to isolate floor from walls and skirting.</p>	

Construction notes

Materials must be installed in accordance with manufacturers' instructions to achieve stated acoustic values. Wall treatments **MUST** be isolated from the floating floor with YELOfon flanking strip. Ensure services do not come into contact with the floor treatment. Once laid, MDF17T boards should be covered with the final floor finish as soon as possible to eliminate the risk of mechanical damage to the edge detail.

Acoustic values

⁽²⁾ Values quoted are typical, based on the treatment being installed correctly and pre-completion tested. Airborne performance tested in accordance with BS EN ISO 140-4:1998 Impact performance tested in accordance with BS EN ISO 140-7: 1998