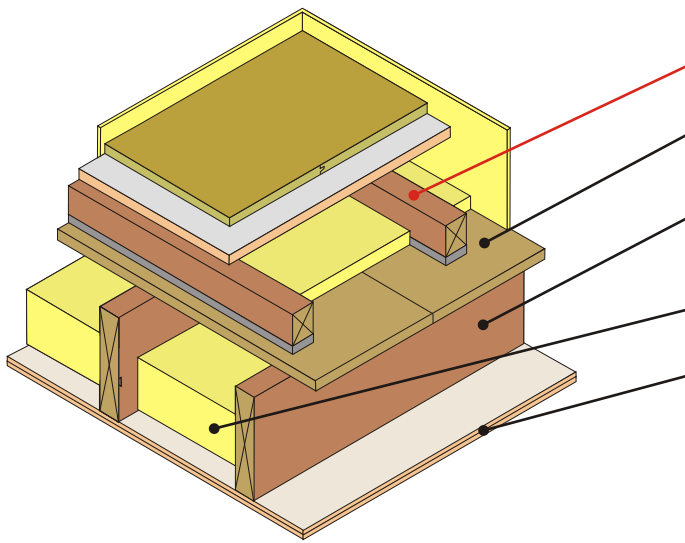


Structural separating floor - Timber (existing)

PCT solution

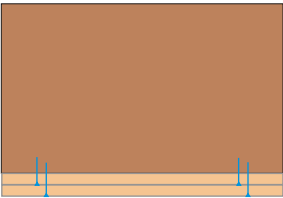
Existing timber joists
Resilient composite deep batten system
Utilising existing ceiling



Floating floor treatment	FFT1 - DECKfon Batten 70 (See Table.13 for full details)
Floor decking	15mm thick (min) OSB deck
Joists	235mm (min) timber joists
Absorbing material	100mm (min) quilt insulation (10-36g/m ²) between joists
Ceiling	See Table.13 for ceiling treatments

Fig. 13

Table. 13

PCT floating floor treatment options	Perimeter resilient flanking strip required	Ceiling treatment
<p>FFT1 - Resilient composite deep batten system</p> <p>DECKfon Batten 70</p> <p>Additional layers required to complete treatment</p> <ul style="list-style-type: none"> •18mm (min) t&g flooring board •19mm Gypsum-based board - 13.5kg/m² •Mineral wool quilt laid between battens <ul style="list-style-type: none"> - 13mm (min) 33-36 kg/m² - 25mm (min) 10 -33kg/m³ <p>Notes. Ensure services do not bridge the resilient layer Void dimension indicated is when floor is loaded to 25kg/m² Batten dimensions: 75mm (h) x 45mm (w) x 2400mm (l)</p> <div data-bbox="571 1189 951 1384" data-label="Image"> </div> <div data-bbox="647 1397 874 1503" data-label="Text"> <p>Typical PCT performance values: $R_w + C_v = 46dB$ $L_{n,w} = 61dB$</p> </div> <p>Construction notes. Materials must be installed in accordance with manufacturers' instructions to achieve required acoustic performance values. 18mm t&g chipboard and 19mm gypsum based plank fixed to DECKfon Batten 70, with 13mm (min) 33-36kg/m³ or 25mm (min) 10-33kg/m³ mineral wool fitted inbetween. Floorboards should be a minimum 15mm OSB with all joints sealed, 50mm x 235mm solid timber joists set at 450mm centres, with 100mm 10-36kg/m³ mineral wool fitted in between and 2 layers of 12.5mm plasterboard (8kg/m²) fixed in a staggered formation to the underside of the joists. Wall treatments MUST be isolated from the floating floor with YELOfon perimeter flanking strip.</p>	<p>YELOfon ES5/120</p> <p>Polyethylene foam flanking strip - 5mm (t) x 120mm (h) x 50m (l) placed around the perimeter of the flooring board to isolate floor from walls and skirting</p>	<p>Ceiling treatment Gypsum-based plasterboard ceiling with minimum mass of 16kg/m², fixed direct to floor joists.</p> 

Acoustic values.

Test data quoted has been conducted at Sound Research Laboratories, Sudbury UKAS ref. 0444. Airborne results tested in accordance with BS EN ISO 140-3: 1995 and rated in accordance with BS ISO 717-1: 1997. Impact results tested in accordance with BS EN ISO 140-6: 1998 and rated in accordance with BS ISO 717-2: 1997.