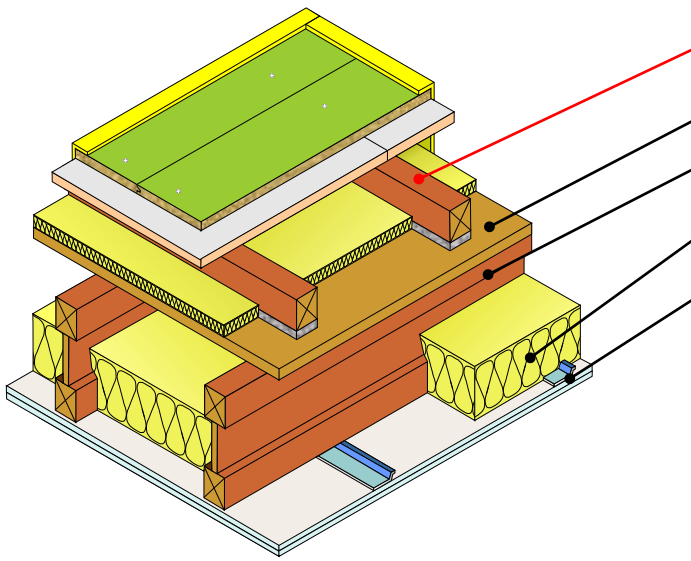


Timber I-joists
Use with timber frame walls only


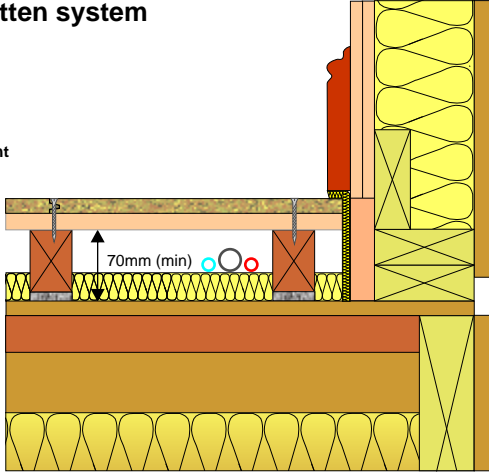
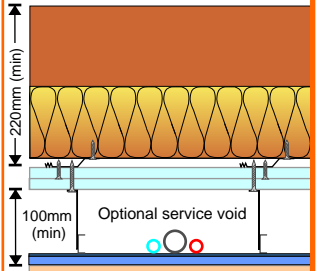


Floating floor treatment	DECKfon Batten 70 (See Table TF1b for full details)
Floor decking	15mm thick (min)
Joists	220mm (min) solid timber joists 240mm (min) timber I-joists 253mm (min) metal web joists 254mm (min) timber web joists
Absorbing material	<ul style="list-style-type: none"> • 50mm FIBREfon MICRO SLAB 50 • 100mm (min) quilt insulation
Ceiling	See Table TF1b for ceiling treatment options



FASTRACKCAD[®]
ARCHITECTURAL CAD DATABASES

Fig. TF1b shows DECKfon Batten 70 and ES5/120 flanking strip - Timber I-joists
Table TF1b

Robust detail E-FT-1 compliant floating floor treatment	Perimeter resilient flanking strip required	Ceiling treatment options
<p>Resilient composite deep batten system</p> <p>DECKfon Batten 70 </p> <p>Additional layers required to complete treatment</p> <ul style="list-style-type: none"> • 18mm (min) tongue & groove flooring board • Gypsum-based board nominal 13.5kg/m² • Mineral wool quilt laid between battens <ul style="list-style-type: none"> - 13mm (min) 33 - 36kg/m³ - 25mm (min) 10 - 33kg/m³ <p>Dimensions Void dimension indicated is when floor is loaded to 25kg/m² Batten dimensions: 75mm (h) x 45mm (w) x 2400mm (l)</p>  <div data-bbox="454 1668 746 1796" style="border: 1px solid black; padding: 5px; text-align: center;"> <p>Typical PCT performance ⁽²⁾</p> <p>$D_{nT,w} + C_{tr} = 50\text{dB}$</p> <p>$L_{nT,w} = 54\text{dB}$</p> </div> <p>Construction notes Materials must be installed in accordance with manufacturers' instructions to achieve stated acoustic values. Wall treatments MUST be isolated from the floating floor with YELOfon ES5/120 flanking strip. Ensure services do not bridge the resilient layer. Services must not puncture primary ceiling lining (except cables, which should be sealed with flexible sealant).</p>	<p>YELOfon ES5/120</p> <p>Polyethylene foam flanking strip: 5mm (l) x 120mm (h) x 50m (l) placed around the perimeter of the flooring board to isolate floor from walls and skirting.</p>	<p>Ceiling board fixings must not penetrate or touch the floor joists 16mm (min) metal resilient bars mounted at right angles to the joist at 400mm centres.</p> <p>Primary ceiling:</p> <p>CT1-Two layers of gypsum-based board, composed of 19mm (nominal 13.5kg/m²) fixed with 32mm screws and 12.5mm (nominal 10kg/m²) fixed with 42mm screws, with all joists staggered.</p> <p>CT2-Two layers of gypsum-based board, composed of 15mm (nominal 12.5kg/m²) fixed with 25mm screws and a second layer of 15mm (nominal 12.5kg/m²) fixed with 42mm screws, with all joists staggered.</p> <p>Sacrificial ceiling (optional): Metal ceiling system with a 150mm (min) void fixed to underside of primary ceiling. One layer of nominal 8kg/m² gypsum based board.</p>  <p>Construction notes Services must not puncture primary ceiling lining (except cables, which should be sealed with flexible sealant).</p>

Acoustic values

² Values quoted are typical, based on the treatment being installed correctly and pre-completion tested, with airborne performance tested in accordance with BS EN ISO 140-4:1998 and impact performance tested in accordance with BS EN ISO 140-7:1998.

Code credits available

(Contact Collecta for further information)