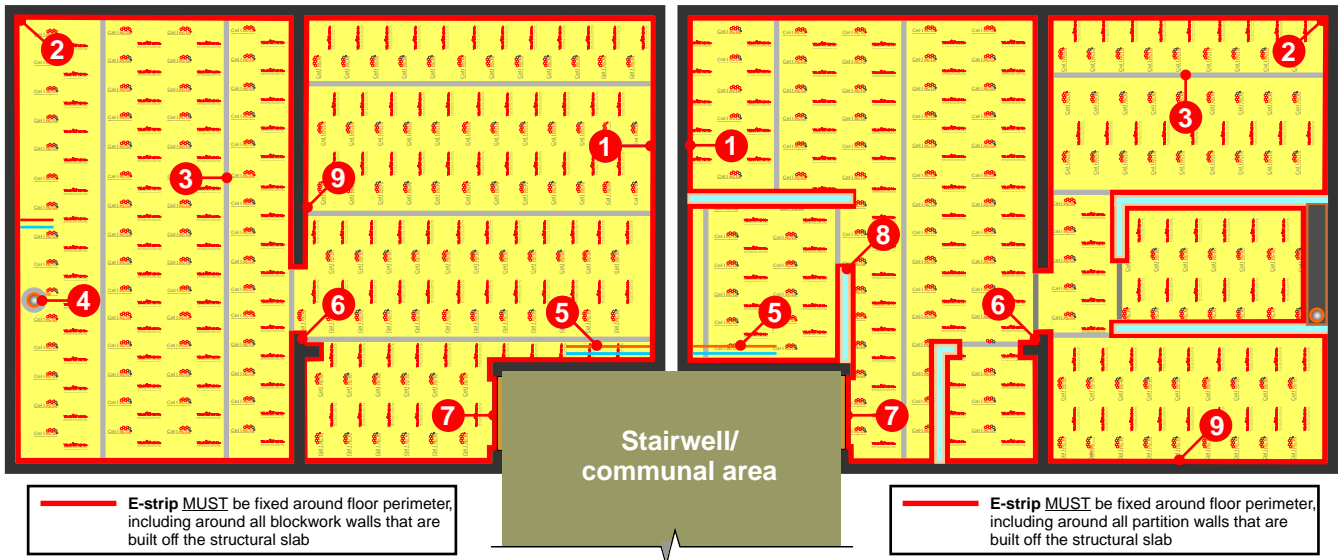


Design & installation details - Robust detail E-FC-5

The acoustic performance of the floor will be compromised if the screed is not completely isolated from the structural slab, soil pipes, door frames, the surrounding walls and their treatments. To address this risk, each potential problem area needs to be detailed accordingly.

Partitions installed off the floor screed

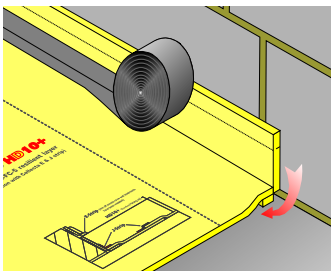
Partitions installed before the floor finish is laid



E-strip MUST be fixed around floor perimeter, including around all blockwork walls that are built off the structural slab

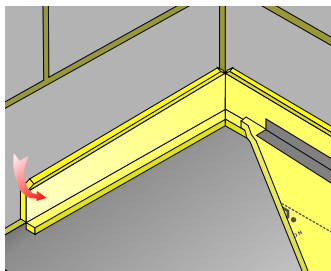
E-strip MUST be fixed around floor perimeter, including around all partition walls that are built off the structural slab

1 Perimeter detail



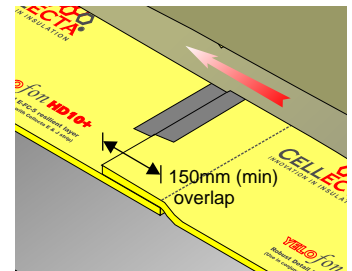
Around the whole floor perimeter stick the E-strip to the wall, folding up the bottom flap and overlap with the HD10+ (by at least 40mm). Seal all joints with J-strip.

2 Room corners



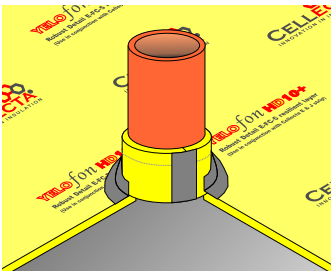
In corners, mitre the E-strip's upper and lower flaps to allow them to fold in. The bottom flap must then be overlapped by the HD10+ by at least 40mm, with the joint sealed with J-strip.

3 Overlapping rolls



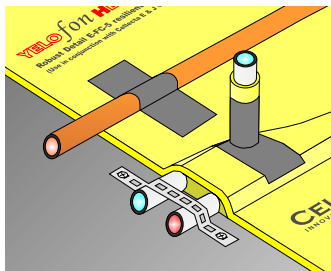
Overlap each roll of HD10+ by at least 150mm and seal all joints with J-strip. To totally eliminate the risk of screed migration, cover the HD10+ with a polythene sheet sealing all joints with a suitable tape.

4 Soil pipes



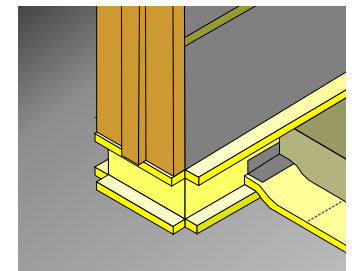
Soil pipes and services that penetrate through the HD10+ or E-strip **MUST** be isolated from the screed by wrapped them in E-strip and sealing the joints with J-strip.

5 Services



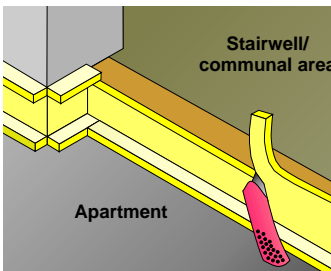
Services should be secured to the structural slab with straps and covered with HD10+. Alternatively, they can be laid over the HD10+ and held in position with J-strip until the screed is applied. Services that penetrate the resilient layer **MUST** be isolated from the surrounding structure by wrapping them in E-strip, and sealing all joints with J-strip.

6 Doorways



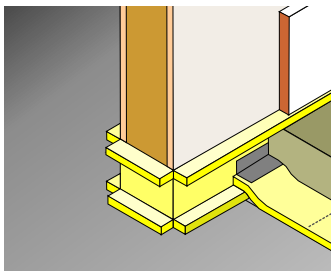
Ensure E-strip goes under **ALL** door frames to eliminate the risk of acoustic flanking.

7 Thresholds



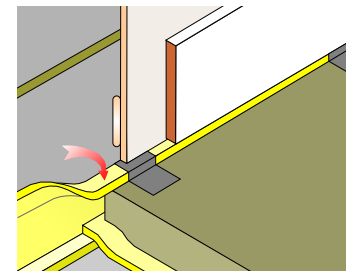
To stop acoustic flanking at the threshold, fix a timber batten across the door opening to act as a "stop" and stick the E-strip to it. Trim off excess strip with a sharp knife.

8 Partitions



Should partitions be built off the sub-floor, stick the E-strip to the partition, folding up its bottom flap. Overlap the HD10+ and seal all joints and gaps with J-strip.

9 Wall treatments



Fold down the upper section of the E-strip and tape in position. Ensure **ALL** wall treatments including plaster, plasterboards, plaster adhesive and skirting boards are completely isolated from the screed.