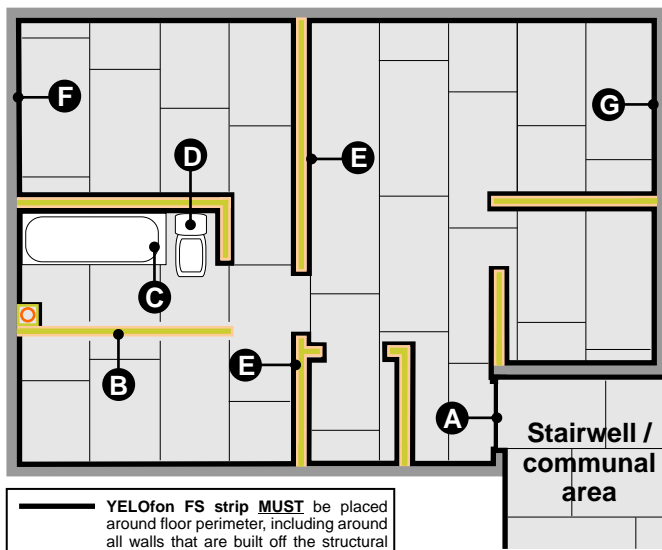
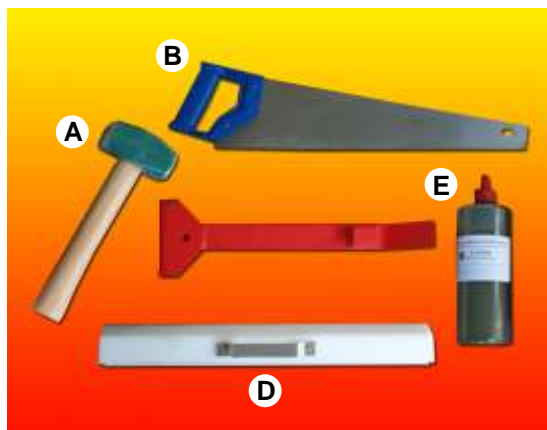


The acoustic performance of the floor structure will be compromised if the ScreedBoard 28 is not completely isolated from the timber sub-floor, surrounding walls, soil pipes, door frames and wall treatments. To address this risk, each potential problem area needs to be detailed accordingly.

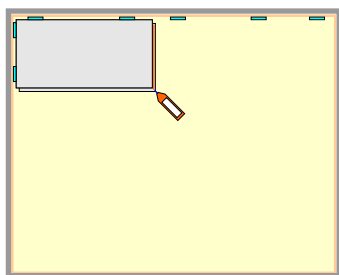
Install the partitions before the ScreedBoard is laid



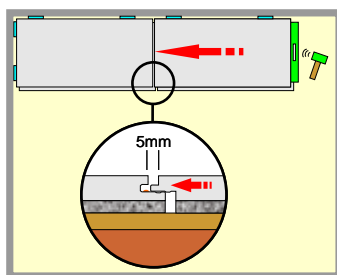
Fixing equipment required



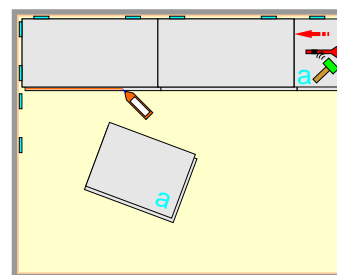
A. Club hammer
B. Hand or skill saw
C. ScreedBoard "Pull bar"
D. ScreedBoard "Fixing batten"
E. ScreedBoard adhesive (1L bottle)
Packing shims (not shown)



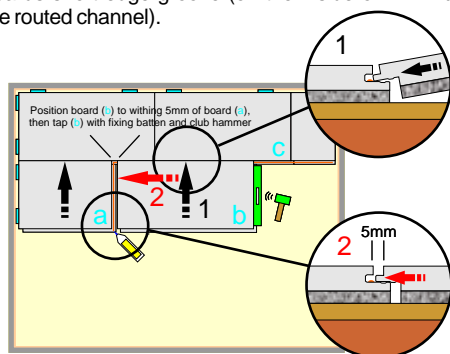
- (1) Clear sub-floor of any building debris.
- (2) Starting in the far left hand corner, place packing shims along the two right angle walls.
- (3) Install the first **ScreedBoard** (with its tongues facing the walls), using packing shims to produce a 6-10mm expansion gap.
- (4) Apply a strip of **SB adhesive** along the boards short edge groove (on the inside of the routed channel).



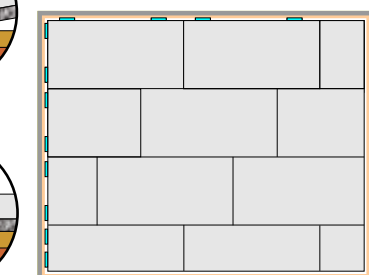
- (5) Interlock the second **ScreedBoard** into the first one, ensuring the edges line up exactly.
- (6) Push the **Fixing batten** into the board's end groove and tab with a club hammer until the boards fully interlock and no gap can be seen.
- (7) Apply a strip of **SB adhesive** along the board's short edge tongue.



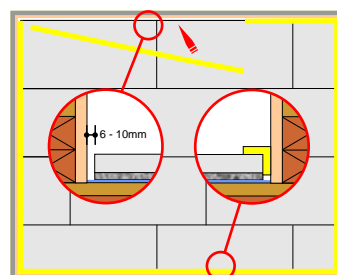
- (8) At wall abutments, cut the **ScreedBoard** "a" to suit, leaving a 5-10mm expansion gap. Interlock the boards together by levering them with the "Pull bar" or taping the "Pull bar" with a club hammer.
- (9) Apply a strip of **SB adhesive** along the first row's long edge groove.



- (10) Start the next row with the cut off section from the previous row (a) and interlock the **ScreedBoards** together, leaving a 6-10mm expansion gap where it meets the wall.
- (11) Apply a strip of **SD adhesive** along the board's short edge tongue. Position **ScreedBoard "b"** to within 5mm of board "a" and interlock into the previous row "c".
- (12) Push the **Fixing batten** into board "b" short edge groove and tap with a club hammer until the cap is fully closed.
- (14) Continue as before.

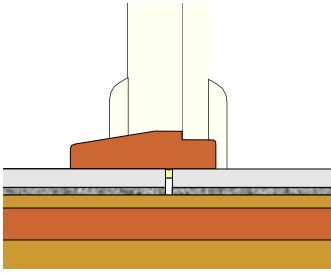


- (13) Cover the whole floor with **ScreedBoard 28** leaving a 6-10mm expansion gap is maintained around the floor's perimeter..



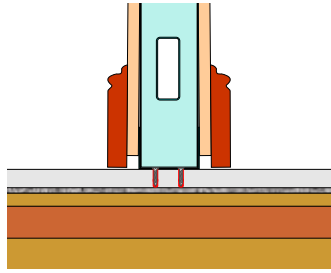
- (14) Remove the packing shims and push the **YELOfon FS50 strip** into the expansion gap around the floor's perimeter.
- (15) Sit the wall treatment on the strip and trim of any excess strip.
- (16) If required, seal any gaps with a suitable flexible mastic.
- (17) Any excess **SB adhesive** should be allowed to cure (24 hours) and then removed with a scraper and sandpaper.

A Door threshold



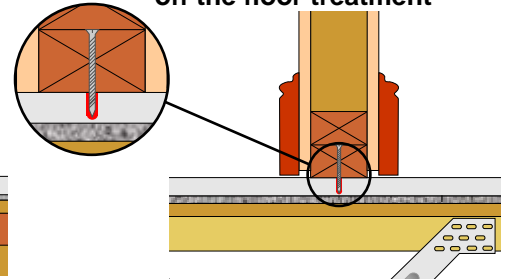
Leave a 5-10mm expansion gap between the habitable area and the communal area ScreedBoards.

B Metal frame partition built off the floor treatment

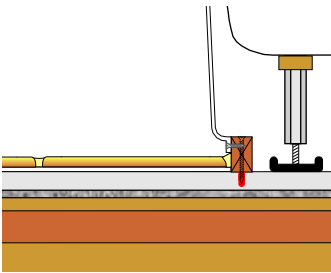


Non-load bearing metal frame or timber stud walls can be built directly off the ScreedBoard 28. Care should be taken to ensure screws DO NOT penetrate the resilient layer.

B Timber stud partition built off the floor treatment

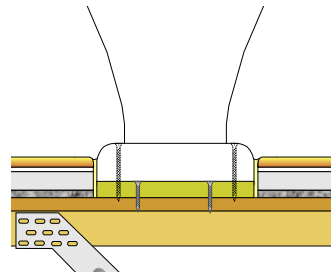


C Baths, shower trays and sanitary ware built off floor treatment.



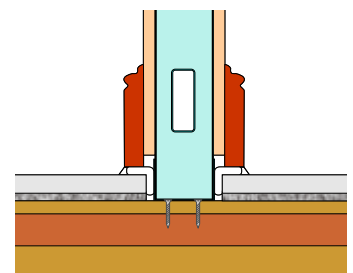
Baths, shower trays and sanitary ware can be built directly off the ScreedBoard 28. Under no circumstance should screws penetrate the resilient layer.

D Baths, shower trays and sanitary ware built off the structural floor



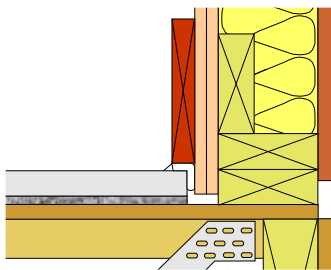
Baths, shower trays and sanitary ware built off the structural floor should be isolated from the ScreedBoard 28 and any floor finished.

E Metal frame partition built off the structural floor



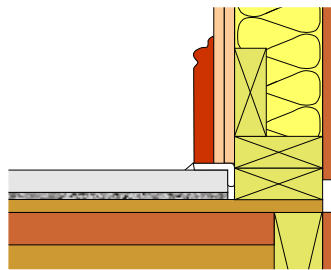
Lightweight partition walls built off the structural floor **MUST** be isolated from the ScreedBoard with YELOfon FS50 strip.

F Wall treatment installed before the ScreedBoard 28



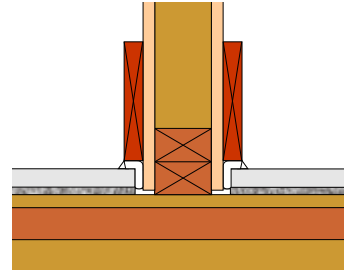
Wall treatments **MUST** be isolated from the ScreedBoard 28 with YELOfon FS50 strip.

G Wall treatment installed after the ScreedBoard 28



Wall treatments **MUST** be isolated from the ScreedBoard 28 with YELOfon FS50 strip.

E Timber stud partition built off the structural floor



Lightweight internal walls built off the structural floor **MUST** be isolated from the ScreedBoard with YELOfon FS strip.



Cellecta manufactures an extensive range of thermal and acoustic products to suit a multitude of applications. All Cellecta's products are made to the highest technical specification and are both NHBC and Zurich accepted.

- FREE Technical advice
- FREE Installation advice
- FREE Take-off service
- FREE U-value, condensation risk and imposed load calculations

eco XPS

<5 GWP Extruded Polystyrene

YELOFOAM X

High Performance Extruded Polystyrene

XLAMINATES

Extruded Polystyrene Laminates

UNICLOSER® XCC

Cavity Closer Solutions

YELOfon®

Closed-cell extruded polyethylene products and systems

FIBREfon®

100% Recycled acoustic resilient sheets

DECKfon®

Open-cell polyurethane acoustic systems

ScreedBoard 28

Dry screed acoustic overlay boards